



Maine Natural Resource Conservation Program

2024 Annual Report

January 1, 2024 – December 31, 2024



Granite Point Marsh Project, Biddeford, Maine

2024 MNRCP Award Recipient

Photo credit: US Fish and Wildlife Service

<http://mnrcp.org/>



Maine Natural Resource Conservation Program
2024 Annual Report
January 1, 2024 – December 31, 2024

Table of Contents

1. Executive Summary	1
2. Introduction	2
3. Impacts, Fees Received, and Credits Sold	3
4. MNRCP Compensation Project Awards	6
5. U.S Army Corps of Engineers Public Notice Process	9
6. Assessment of Program Goals	9
7. Updates on Previously Funded Projects	14
8. Internal Controls & Financial Reporting	16
9. Program Updates	17
Appendix A – MNRCP Region Boundaries and Biophysical Regions	18
Appendix B – MNRCP In-Lieu Fee Permitted Impacts	19
Appendix C – Maine Land Trust Service Areas	20
Appendix D – MNRCP Compensation Projects	21
Appendix E – MNRCP Debit and Credit Summary	22
Appendix F – Statewide Habitat Focus Areas	24
Appendix G – Compensation Planning Framework Summary of Regional Goals	25
Appendix H – List of all In-Lieu Fee Permits	26

1. Executive Summary

The State of Maine In Lieu Fee (ILF) Compensation Program and the Maine Natural Resource Conservation Program (MNRCP) are widely viewed as an effective alternative to other compensatory mitigation mechanisms available in Maine. The Maine Department of Environmental Protection (DEP) and the U.S Army Corps of Engineers (Corps) estimate that approximately 95% of permitted projects with wetland impacts that trigger state or federal compensation thresholds in Maine currently compensate those impacts through the ILF Program and MNRCP. MNRCP continues to meaningfully advance the goals of increasing the extent and quality of restoration, enhancement, creation, and protection of protected natural resources over that typically achieved by permittee-responsible mitigation and of providing DEP and Corps permit applicants greater flexibility in compensating for adverse impacts to natural resources.

Since the program was established in 2008, approximately 493 permits have been issued that utilized the ILF program to provide compensation for natural resource impacts, resulting in approximately 351.37 wetland credits sold. While one wetland credit is equal to one acre, it is important to note that this does not represent 351.37 acres of wetland loss, but rather it includes a mix of impact types, including permanent fill, conversion (e.g., clearing of forested wetlands that converts them to emergent or scrub-shrub wetlands), shading (e.g., a dock installed over eelgrass), and temporary fill (e.g., the temporary placement of construction mats in a wetland). These impacts have resulted in approximately \$43,935,739 in fees that have been paid by developers to compensate for natural resource impacts. The program has subsequently used those fees to award funding to 174 projects that have generated (or will generate) an estimated total of 1,007.74 wetland credits. In addition, MNRCP has funded projects that have resulted in nearly 100 miles of river and stream habitat being opened to aquatic organism passage through such projects as dam and barrier removals and culvert upgrades. MNRCP supports match funding and prefers to leverage other funding sources to support projects. Percentages of project costs paid by MNRCP generally range from around 50% to 100%. Wetland credits are calculated only on the percentage paid by the program.

During the 2024 calendar year, MNRCP received In-Lieu Fees from 29 projects permitted by state and/or federal agencies. The largest percentage of 2024 fees (48.9%) were from projects in the Southern Maine region. The Central Interior and Midcoast region had the highest number of projects permitted, 14, with the Southern Maine region having the second highest at 12. Wetland credits were also sold in the Downeast Maine region. No wetland credits were sold in the Aroostook Hills and Lowlands, Central and Eastern Lowlands, Central and Western Mountains, or Northwest Maine regions in 2024.

The 29 projects that used the ILF program for compensation in 2024 resulted in approximately 23.34 wetland credits sold (23.34 acres of impacts to aquatic resources). Credits were sold for a mix of permanent fill, shading, and clearing/conversion impacts. In terms of general resource types, the resources with the most impacts across all regions were freshwater emergent wetlands (28.96% of total), Inland Waterfowl and Wading Bird Habitat (28.46% of total), and freshwater forested wetlands (24.85% of total). In total, impacts to freshwater wetlands overall totaled approximately 97.7% of total impacted area and impacts to coastal wetland resources (estuarine and marine wetlands) accounted for approximately 2.3% of the total impacts.

In 2024, 3 compensation projects in 2 different regions were awarded funding: 1 project in the Central Interior and Midcoast region and 2 projects in the Southern Maine region. All 3 funded projects were wetland restoration or enhancement projects located on previously conserved land.

MNRCP awards in 2024 totaled \$1,278,182. This total is the lowest total amount awarded since 2015. These funds will be used for restoration and creation of 8.9 acres of freshwater wetlands, enhancement of

approximately 51.2 acres of salt marsh, and enhancement of 22.2 acres freshwater tidal wetlands. MNRCP contributions to these projects ranged from 67.6% to 91.8% of the total project costs.

2. Introduction

In 2007, the State of Maine developed an In-Lieu Fee Compensation Program to augment its regulatory program and created the MNRCP to allocate the funds collected for compensatory mitigation projects. An initial agreement for services between the Maine Department of Environmental Protection (DEP) and The Nature Conservancy (TNC) was signed on October 3, 2007, outlining TNC's responsibility to administer MNRCP. A Memorandum of Agreement between the New England District of the U.S. Army Corps of Engineers (Corps), the DEP, and TNC was signed on January 31, 2008, to launch the program. On September 21, 2011, a new In-Lieu Fee Program Instrument was signed by DEP and the Corps to update the governing documents for MNRCP and to ensure continued compliance with the revised regulations for compensatory mitigation under Section 404 of the Clean Water Act issued by the Corps and the U.S. Environmental Protection Agency in 2008 (the "Mitigation Rule"), as well as the compensatory mitigation standards outlined in the Maine Natural Resource Protection Act (NRPA).

The term of the initial contract between DEP and TNC for administration of the program ended on September 30, 2017. DEP issued a Request for Proposals to initiate a new contract for program administration in July of 2017. TNC submitted a proposal and was selected by the State of Maine to continue to administer the program in September of 2017. A new contract was signed by TNC and DEP in May 2018, with an official contract start date of June 1, 2018. The contract is a 2-year term which can be renewed up to 4 times for a total of 10 years. The contract was renewed for additional 2-year terms on September 3, 2020, June 16, 2022, and May 23, 2024.

This annual report outlines MNRCP activities from January 1, 2024, through December 31, 2024. For more information on Maine's In-Lieu Fee Program, please visit the following websites:

U.S. Army Corps of Engineers, New England District:

<https://www.nae.usace.army.mil/Missions/Regulatory/Mitigation/In-Lieu-Fee-Programs/ME/NRCP/>

Maine Department of Environmental Protection:

https://www.maine.gov/dep/land/nrpa/ILF_and_NRCP/index.html

Maine Natural Resource Conservation Program website (maintained by TNC):

<http://mnrcp.org/>

3. Impacts, Fees Received, and Credits Sold

During the period of this annual report, 29 In-Lieu Fee (ILF) payments (credit sales) totaling \$3,861,584.03 were received in three of the seven MNRCP Regions. The number of payments was the lowest in a calendar year since 2017, yet the total dollar amount was close to the average over that same time span. This indicates that the payments in 2024 were generally larger in size. Since 2009, the two most developed regions of the state, Southern Maine and Central Interior and Midcoast, have averaged approximately 25 payments combined per year (over 80% of the total permits). The remaining 5 regions combined, Aroostook Hills and Lowlands, Central and Eastern Lowlands, Central and Western Mountains and Downeast Maine, have averaged approximately 5 combined permits per year. Appendix B provides a map of permitted impact locations and highlights those payments made in 2024. Appendix H provides a complete list of all permitted impacts through 2024 that have generated ILF payments and the funds available for MNRCP award, broken out by MNRCP Region.

Table 1 below shows the number of permits using ILF in calendar year 2024, the total wetland credits sold, the ILF payment totals in each region, and the administrative fees received by DEP and TNC. DEP and TNC receive administrative fees of 7.05% and 7.95%, respectively, of the total fee paid. The table also indicates the percentage of the total ILF payments received during this reporting period that fell within each Region. In the 2024 calendar year, the Central Interior and Midcoast and Southern Maine regions continued the general trend of receiving the highest number of ILF payments as compared to the other regions in the state. However, in 2024, the Downeast Maine region had the highest total of wetland credits sold. This is largely due to one project with significant impacts to Inland Waterfowl and Wading Bird Habitat (IWWH). Impacts to the upland portions of IWWH require a smaller fee for wetland credits, which explains why the overall dollar amount was smaller in Downeast despite the larger number of wetland credits sold. This is further shown in Table 2 below. No payments were received in the Aroostook Hills and Lowlands, Central and Eastern Lowlands, Central and Western Mountains, or the Northwest Maine regions in 2024.

Table 1: ILF Payments Received in 2024 by Region

Region	Number of ILF Permits	Wetland Credits Sold	ILF Payments	TNC Admin (7.95%)	DEP Admin (7.05%)	Available for Award	Percent of Total Fees
Central Interior and Midcoast	14	5.09	\$1,018,873.15	\$81,000.41	\$71,830.57	\$866,042.17	26.4%
Downeast Maine	3	9.21	\$954,598.10	\$75,890.54	\$67,299.17	\$811,408.39	24.7%
Southern Maine	12	9.04	\$1,888,112.78	\$150,104.97	\$133,111.95	\$1,604,895.86	48.9%
Total	29	23.34	\$3,861,584.03	\$306,995.92	\$272,241.69	\$3,282,346.42	100%

Table 2 provides a breakdown of the impacts to different habitat types and the wetland credits sold for each region. Despite the fact that the Central Interior and Midcoast region had the greatest number of permits (see Table 1), more wetland credits were sold in both Downeast Maine and Southern Maine. This is primarily because in both Downeast Maine and in Southern Maine there were large projects that had significant impacts to IWWH. The projects, a wind energy project in Downeast Maine and an airport expansion in Southern Maine, both had significant impacts to the upland portions of these habitats. As described above, impacts to the upland portions of IWWH require a smaller fee. As shown in Table 2, almost half of the wetland credits sold in Downeast Maine were for impacts to IWWH.

Table 2: 2024 Impacts to Habitat Types and Credits Sold by MNRCP Region

Region	Habitat Type Impacted	Total Square Feet	Wetland Credits Sold	Percent of Total
Central Interior and Midcoast	Estuarine Intertidal (E2)	4,380	0.11	0.5%
Central Interior and Midcoast	Marin Intertidal (M2)	1,128	0.05	0.2%
Central Interior and Midcoast	Marine Subtidal (M1)	2,044	0.06	0.3%
Central Interior and Midcoast	Palustrine Aquatic Bed (PAB)	1,885	0.02	0.1%
Central Interior and Midcoast	Palustrine Emergent (PEM)	156,339	3.46	14.8%
Central Interior and Midcoast	Palustrine Forested (PFO)	58,312	1.05	4.5%
Central Interior and Midcoast	Palustrine Scrub-Shrub (PSS)	14,577	0.33	1.4%
	Total for Region:	238,665	5.09	21.8%
Downeast Maine	Estuarine Intertidal (E2)	5,800	0.27	1.1%
Downeast Maine	Palustrine Emergent (PEM)	45,449	0.64	2.7%
Downeast Maine	Palustrine Forested (PFO)	129,106	2.56	11.0%
Downeast Maine	Palustrine Scrub-Shrub (PSS)	45,449	0.64	2.7%
Downeast Maine	Inland Waterfowl and Wading Bird Habitat (IWWH)	175,722	4.34	18.6%
Downeast Maine	Vernal Pool (VP)	826	0.04	0.2%
Downeast Maine	Vernal Pool Critical Terrestrial Habitat (VPCTH)	32,359	0.74	3.2%
	Total for Region:	434,711	9.21	39.5%
Southern Maine	Marine Intertidal (M2)	1,372	0.06	0.2%
Southern Maine	Palustrine Emergent (PEM)	110,982	2.67	11.4%
Southern Maine	Palustrine Forested (PFO)	91,844	2.19	9.4%
Southern Maine	Palustrine Scrub-Shrub (PSS)	71,839	1.77	7.6%
Southern Maine	Inland Waterfowl and Wading Bird Habitat (IWWH)	87,003	2.30	9.9%
Southern Maine	Vernal Pool Critical Terrestrial Habitat (VPCTH)	2,355	0.05	0.2%
	Total for Region:	365,395	9.04	38.7%
TOTAL FOR ALL REGIONS:		1,038,771	23.34	100%

Table 3 shows the total impacts and wetland credits sold for all habitat types across all MNRCP regions. The habitat types with the most impact throughout the state in 2024 were palustrine forested and emergent wetlands and IWWH. These three habitat impact types accounted for 82.3% of the total impacts in the state. Forested wetlands are consistently one of the most common wetland resources that are impacted in the state. As noted above, the impacts to IWWH in 2024 were higher than past years because of two projects with large impacts to this resource. The remaining impacts were primarily other freshwater resources, including palustrine scrub-shrub and aquatic bed wetlands, and Vernal Pool Critical Terrestrial Habitat. Impacts to coastal wetlands accounted for only 2.3% of the total impacts in the state.

Table 3: 2024 Impacts and Credits Sold for Habitat Types Across All MNRCP Regions

Habitat Category	Habitat Type	Total Square Fee Impacted	Wetland Credits Sold	Percent of Total
Coastal Wetlands	Estuarine Intertidal (E2)	10,180	0.37	1.59%
Coastal Wetlands	Marine Intertidal (M2)	2,500	0.11	0.46%
Coastal Wetlands	Marine Subtidal (M1)	2,044	0.06	0.27%
Freshwater Wetlands	Palustrine Aquatic Bed (PAB)	1,885	0.02	0.09%
Freshwater Wetlands	Palustrine Emergent (PEM)	312,770	6.76	28.96%
Freshwater Wetlands	Palustrine Forested (PFO)	279,262	5.80	24.85%
Freshwater Wetlands	Palustrine Scrub-Shrub (PSS)	131,865	2.74	11.74%
Significant Wildlife Habitat	Vernal Pool	826	0.04	0.16%
Significant Wildlife Habitat	Vernal Pool Critical Terrestrial Habitat	34,714	0.79	3.41%
Significant Wildlife Habitat	Inland Waterfowl and Wading Bird Habitat	262,725	6.64	28.46%
TOTAL:		1,038,771	23.34	100%

Table 4 below provides the total impacts broken down by impact type. It is important to note that not all impacts that require compensation result in complete wetland loss. Impacts such as wetland clearing, wetland conversion, temporary fill, and shading result in changes to the wetlands, but not a complete loss of the habitat or complete loss in wetland functions and values. These impact types typically require fewer wetland credits as mitigation (and therefore reduced fees) to account for the fact that the wetland will still provide some functions and values, albeit reduced as a result of the impact.

Table 4. Impact Type and Credits Sold Across All MNRCP Regions in 2024

Impact Type	Total Area Impacted (sf)	Wetland Credits Sold	Percent of Total Credits
Permanent Fill	910,042	22.17	94.9%
Clearing/Conversion	106,748	0.858	0.04%
Shading	1,138	0.014	<0.001%
Temporary Clearing	8,470	0.013	<0.001%
Excavation	12,371	0.284	0.012%
TOTAL:	1,038,771	23.34	100%

Overall program debits (impacts, or wetland credits sold) and credits generated (compensation) are carefully tracked to ensure the timely and effective compensation of functions and values that have been lost. Debits and credits are tracked by region and by resource types. During each funding round, any resources that have a negative balance (i.e., more impacts than compensation) are listed as Priority Resources for that funding round. Appendix E shows the debit and credit summary report through December 31, 2024, that is used by MNRCP administrators and committee members to help track progress towards the goal of providing in-kind compensation for all impacted resource types. Statewide, the program has produced more overall credits than debits; however, there are specific resources in specific regions for which the program has had more impacts than credits. These resources are shown in red in Appendix E. The balance between credits and debits shifts year to year based on the projects that purchase wetland credits from the ILF program and the projects that are awarded funds as compensation. For the current balance of advance and released credits

for the program, please see the U.S. Army Corps of Engineer’s Regulatory In-Lieu Fee and Bank Information Tracking System (RIBITS), available at: <https://ribits.ops.usace.army.mil>.

Table 5 below shows the breakdown of the different sectors that purchased wetland credits in 2024. Energy supply/transmission had the highest total of wetland credits; however, the total fees were less than the Education/Health facility category. This difference is because a large number of the wetland credits sold in the Energy category in 2024 were for impacts to upland portions of IWWH. The credit fees for impacts to the upland portions of IWWH are significantly less than the impacts to wetlands. Therefore, while the number of credits is high, the fees paid are much less. Educational/Health facility had the highest total fees, driven primarily by one large school development project with wetland impacts. While residential and commercial development accounted for the highest number of total permits, these projects tend to be smaller than energy projects resulting in fewer wetland credits sold. The total breakdown of the sources of fees for the life of the program is provided in Table 10 below.

Table 5. Sources of In-Lieu Fee Payments and Credits Sold in Maine in 2024

Impact Category	Wetland Credits Sold	Total Fees	Percent of Total Fees	Number of Permits	Percent of Total Permits
Educational/Health facility	5.39	\$1,291,751.60	33.5%	5	17.2%
Residential/Commercial development	4.42	\$973,207.51	25.2%	12	41.4%
Energy supply/transmission	9.09	\$922,676.76	23.9%	5	17.2%
Transportation	3.95	\$550,997.36	14.3%	6	20.7%
Municipal	0.49	\$122,950.80	3.2%	1	3.4%
TOTAL:	23.34	\$3,861,584.03	1	29	1

4. MNRCP Compensation Project Awards

The 2024 MNRCP funding round commenced with a Request for Letters of Intent released on May 22, 2024, and concluded on December 4, 2024, with the Interagency Review Team (IRT), also referred to as the Approval Committee, making final award decisions. The final result of the 2024 review process was the award of \$1,278,182 for three compensation projects in two different regions: Central Interior and Midcoast and Southern Maine. One additional proposal was submitted in the Central Interior and Midcoast region, but it was withdrawn by the applicant during the review process. There were funds available in all other regions; however, no other proposals were received. The three total awards was the lowest number of awards in a single funding round in the program’s history. See Appendix D for a map of the locations of the 2024 project awards, as well as all of the previously awarded MNRCP projects to-date.

The MNRCP project selection process is purposely divided into two stages: the Letter of Intent stage and the full proposal stage. The Letter of Intent (LOI) stage consists of a web-based form submittal process which allows applicants to briefly outline their project to determine if it will meet the program requirements prior to completing a more intensive full proposal. Since this program has very specific requirements that differ from many other funding programs with which applicants may be familiar, the LOI stage gives applicants the opportunity to have their project pre-screened for suitability before investing substantial time in a more in-depth application. LOIs are submitted through the program website (<http://mnrcp.org/>) using an online submission form. Sponsors who submit Letters of Intent for projects that meet the program’s criteria are then invited to submit full proposals.

For the 2024 funding round, 16 Letters of Intent were submitted. Due to the program’s recent shift to trying to fund more restoration and enhancement projects, three projects were not invited to submit proposals because they were “preservation only” (no restoration or enhancement component) and did not contain any of the resources that DEP and the Corps had determined were required for preservation projects to be considered. Two additional “preservation only” projects were invited to submit full proposals because they contained potential vernal pools, which the agencies considered to be a resource that could be mitigated using preservation projects. However, the applicants were warned that their projects may not be prioritized unless they also identified restoration opportunities. These five projects may have been invited to submit full proposals without hesitation in previous years, but with the desired shift to fund more restoration projects, they were either prohibited or discouraged from submitting proposals. Two additional projects were invited to submit proposals only if they were able to identify additional restoration opportunities on the site. Three projects did not meet MNRCP goals and were not invited to submit proposals. Ultimately, six projects were invited to submit full proposals in 2024.

Of the six projects invited to submit full proposals, four submitted full proposals for review. One of the proposals that was submitted was withdrawn during the review period because the project was primarily a “preservation only” project and the applicant was informed after the first Review Committee meeting that they did not have a good chance at receiving funding.

Table 6 summarizes the total funds available for each region in 2024 at the time of the Approval Committee (IRT) meeting. This amount includes fees paid into the program in 2024 up to the time of the meeting, funds remaining after the 2023 funding round, plus interest and any funds returned/not used by previous projects. Table 5 also includes the total funds requested by applicants and the total funds awarded in each region.

Table 6: 2024 Funds Available for Compensation Projects vs. Funds Requested

MNRCP Region	Total Funds Available During Funding Round*	Total Funds Requested from MNRCP	Funds Awarded in 2024
Aroostook Hills & Lowlands	\$459,655	\$0	\$0
Central & Eastern Lowlands	\$847,940	\$0	\$0
Central & Western Mountains	\$1,059,426	\$0	\$0
Central Interior & Midcoast	\$1,241,076	\$468,807	\$468,807
Downeast Maine	\$427,061	\$0	\$0
Northwest Maine	\$34,451	\$0	\$0
Southern Maine	\$1,315,861	\$809,375	\$809,375
TOTAL:	\$5,385,472	\$1,278,182	\$1,278,182

*The amounts shown in this column represent the funds available at the time of the IRT (Approval Committee) meeting on December 4, 2024.

Table 7 presents the results of the fund allocation process, including the status of each full proposal received. In 2024, four projects submitted full proposals; three of those projects were funded and one application was withdrawn. All three projects awarded funding received the full amount of funding requested. All funds not awarded during the 2024 funding round are rolled into the 2025 funding round.

Table 7: 2024 Full Proposals Received and Final Status

MNRCP Region	Project Title	Applicant	Compensation Type	Total Project Cost	Funds Requested	Funds Awarded
Full Proposals Awarded Funding						
Central Interior and Midcoast	Center Point Road Tidal Enhancement	Kennebec Estuary Land Trust	restoration, enhancement	\$510,807	\$468,807	\$468,807
Southern Maine	Granite Point Marsh Enhancement	US Fish and Wildlife Service	enhancement	\$511,067	\$345,250	\$345,250
Southern Maine	Smith Preserve Wetland Restoration	Kennebunkport Conservation Trust	restoration, enhancement	\$509,775	\$464,125	\$464,125
Full Proposals Withdrawn						
Central Interior and Midcoast	Deane Pond Conservation Area	Androscoggin Land Trust	preservation, restoration	\$443,750	\$269,000	\$0
TOTAL:				\$8,627,892	\$6,864,825	\$6,381,799

Table 8 below shows the expected compensation outcomes and the wetland credits generated from each of the three projects awarded funding. All three projects were wetland restoration or enhancement projects on protected lands. It is worth noting that MNRCP did not provide 100% of the total project cost for all 3 projects, as noted in the table below.

Table 8. 2024 Proposals Awarded Funds and Estimated Wetland Credits Generated

Region	Project Title	Organization	Project Details	Total Acres	Percent MNRCP	Estimated Wetland Credits ¹
Central Interior and Midcoast	Center Point Road Tidal Enhancement	Kennebec Estuary Land Trust	Restoration, enhancement of freshwater wetlands through culvert replacement and tidal flow enhancement	22.22	91.8%	4.08
Southern Maine	Granite Point Marsh	US Fish and Wildlife Service	Enhancement of coastal wetlands through salt marsh/tidal flow restoration and enhancement	51.2	67.6%	6.92
Southern Maine	Smith Preserve Wetland Restoration	Kennebunkport Conservation Trust	Restoration, enhancement of freshwater wetlands through fill removal and restoration	8.99	91.0%	4.09

¹At the time of this report, projects listed above have not completed baseline surveys or final work plans and the wetland credits presented are based on the best available data and/or what was provided in the project proposals. These values are considered estimates at this time.

MNRCP allocates credits based on the type of project and the percentage of total project costs covered by MNRCP funds. As shown in Table 8, the percentage of project costs covered by MNRCP for 2024 awards ranged from 67.6% to 91.8%. Ratios of compensation credits used by MNRCP include 20 to 1 for preservation only projects, 5 to 1 for certain enhancement activities, and 2 to 1 for restoration projects. Restoration, enhancement, and creation credit ratios may vary depending on the type of work being done. Compensation ratios are based on the U.S. Army Corps of Engineers Compensatory Mitigation Standard Operating Procedures for the New England District, which was updated in May 2024. The guidance may be found at: <https://www.nae.usace.army.mil/Missions/Regulatory/Mitigation/>

5. U.S. Army Corps of Engineers Public Notice Process

When final full proposals are received, the Corps issues a 30-day Public Notice soliciting comments on the proposals submitted for funding from MNRCP. Comments are solicited from the public; federal, state, and local agencies and officials; the Maine state historic preservation office; the five federally recognized tribes in Maine; and other interested parties. Comments are used to help evaluate the proposals, as well as to assess impacts on endangered species, historic properties, water quality, general environmental effects, and other public interest factors. The Public Notice for the 2024 funding round was issued on October 22, 2024. As of the time of this report, there have been no comments from the public.

Prior to the release of MNRCP funds for any project involving construction, proposals must first be reviewed by the Maine Historic Preservation Commission (MHPC) as prescribed under Section 106 of the National Historic Preservation Act (16 U.S.C. 470 et seq.). Overviews of each MNRCP project and USGS topo maps of each project location are provided to MHPC so they may determine if any proposed construction activities might adversely impact historic resources. Therefore, in addition to the public notice release, MHPC, as well as the tribes in Maine, receive individual notice of the projects. To date, no responses have been received from either MHPC or the tribes for projects awarded funds in 2024.

6. Assessment of Program Progress

The goals of the MNRCP as stated in the In-Lieu Fee Instrument are listed below, along with an updated assessment of progress towards each goal.

1. *Provide an alternative to permittee-responsible and mitigation bank compensatory mitigation that will effectively replace functions and values lost through permitted impacts.*

After 17 years of active operation and funding compensatory mitigation projects, MNRCP is widely viewed as an effective alternative to other mitigation mechanisms available in Maine. Anecdotal estimates from DEP and the Corps suggest that approximately 95% of permitted projects that require compensation for wetland impacts in Maine currently use the ILF program to compensate for those impacts. While the program does not require that all permitted impacts be compensated on a strict, one-to-one basis each year, overall program debits and credits are carefully tracked to ensure the timely and effective compensation of functions and values that have been lost. Similarly, the program does not require that all impacts are compensated in-kind (i.e., compensation that replaces the same resource as was impacted); however, the careful tracking of debits and credits is used to evaluate proposed projects so that the program can provide in-kind compensation as much as possible. Appendix E shows the debit and credit summary report that is used by MNRCP administrators and committee members to help track progress towards these goals. While this version of the report does not yet assign upland credits to wetland debits as is done when projects are entered into the federal tracking system RIBITS, it is still helpful in assessing overall trends (and future versions will be updated to ensure alignment). If there is a concern that too many years have passed without compensation of a particular resource in a given region, the program has actively encouraged proposals that include restoration, enhancement, or preservation of that resource. An additional more extreme step would be to conduct a targeted funding round that solicits proposals only for this particular resource; this step has not been necessary to date. Close collaboration between TNC, DEP, and the Corps allows MNRCP to anticipate when certain resource types or certain geographies will receive more debits and proactively increase outreach in an attempt to bring more projects in to provide credits.

Table 9 below shows the total wetland credits sold through permitted impacts and the total wetland credits generated by MNRCP from 2008 through 2024. As noted above, the credits generated from projects awarded funding in 2024 are considered to be estimates; these estimated credits are included in the totals provided in Table 8. There are additional projects that were funded in previous years that have also not yet completed final mitigation plans, implemented their projects, or completed monitoring. Therefore, the total wetland credits produced by MNRCP Projects shown in Table 9 are subject to change as projects continue through their life cycle. The majority of the credits generated by past MNRCP projects is from preservation, but the total wetland credits generated by the program includes significant credits from restoration and enhancement projects as well.

Table 9. Total Wetland Credits Sold and Wetland Credits Generated through MNRCP, 2008 – 2024

	Total Projects	Wetland Credits
Permitted Impacts	493	351.37
MNRCP Projects	174	1007.74

Because the majority of wetland credits generated through MNRCP have come from preservation, TNC, DEP, and the Corps have put increased focus into funding restoration and enhancement projects. These efforts proved successful in 2023 with 8 of the 11 projects funded including restoration or enhancement. As noted above, in 2024 several “preservation only” projects were not invited to submit proposals.

2. *Substantially increase the extent and quality of restoration, enhancement, creation, and protection of protected natural resources over that typically achieved by permittee-responsible mitigation for activities that impact wetlands, significant wildlife habitats, and other waters of the State of Maine, which include waters of the U.S.*

The Maine DEP’s Biological Monitoring Program produced a report in October 2013 entitled “Evaluating Alternative Wetland Compensatory Mitigation Assessment Techniques”¹ that indicates potential issues and trends on mitigation sites. This was a study geared toward evaluating assessment methods and it included a small number of sites representing a cross-section of different mitigation projects completed between 1995 and 2007. Nine permittee-responsible mitigation sites were studied. No MNRCP projects were included in the sample; however, the study provides some insights that are applicable to mitigation projects as a whole. Several differences were found between the mitigation study sites and reference sites. One of the strongest differences was the dominance of *Typha sp.* (cattail) on seven of the nine permittee-responsible mitigation study sites. *Typha* was not common on the reference sites and, where present, was not dominant. Mitigation sites also generally had significantly higher nutrient levels and lower water quality classifications. The study also found that the mitigation sites in general had fewer numbers of the types of sensitive aquatic macroinvertebrate taxa and a higher proportion of taxa adapted to a wide range of environmental conditions. The report indicated that landscape setting and surrounding land use have a significant influence on water quality and aquatic life criteria in the mitigation sites sampled. Habitat complexity, the presence of buffers, and the quality of aquatic and riparian habitat were also found to influence these criteria. This is an important point to consider for MNRCP site selection. Generally speaking, MNRCP has been more likely to fund projects that are located within natural, undeveloped areas with strong upland and riparian buffers.

¹ DiFranco, J.L., B. Connors, T. Danielson, L. Tsomides. 2013. Evaluating Alternative Wetland Compensatory Mitigation Assessment Techniques: 104b3 Wetland Program Development Grant Final Report. DEPLW-1258. Maine Department of Environmental Protection, Augusta, ME.

DEP continued monitoring mitigation and reference sites since the 2013 report was written and has included MNRCP sites in their annual monitoring for the past five years. In past years, DEP has monitored the Clark Island Wetland Restoration Project in St. George, the Basin Preserve Wetland Restoration Project in Phippsburg, the Taylor Bait Ponds Restoration Project in Orono, the Tiger Hill Forest Project in Casco, the Perley Pond/Northwest River Project in Sebago, the Suckfish Brook Project in Falmouth (both wetlands and stream monitoring), the Shiloh Pond Project in Kingfield, the Hansen Pond Project in Acton, the Morse Pond Project in Georgetown, and the Barrows-Louderback Preserve in Edgecomb.

In early 2023, DEP finalized a follow up report² to the 2013 report which included the results of monitoring at the above-mentioned MNRCP sites, along with other permittee response mitigation sites. The 2023 report supported the findings of the 2013 report that landscape setting and land use in the surrounding watershed significantly influence the water quality and attainment of aquatic life, including macroinvertebrate communities. The study also found that the type of mitigation site (restoration/enhancement vs. preservation) also influenced water quality and biological metrics. Restoration sites generally had lower water quality during the early years after construction but were found to improve over time. Preservation sites generally had higher water quality due to their landscape setting. Specific to MNRCP, the report also made the following conclusions:

- Mitigation sites funded through MNRCP were found to outperform permittee responsible mitigation sites by most water quality metrics.
- MNRCP preservation sites appeared to have the best performance attaining water quality goals, mostly likely due to their associations with large tracts of preserved lands and location within areas conserved as long-term natural areas.

Overall, the reports show that MNRCP is achieving its goal of increasing the extent and quality of restoration, enhancement, creation, and protection of protected natural resources over that typically achieved by permittee-responsible mitigation.

3. *Reduce the extent of cumulative adverse impacts to aquatic resources that are considered protected natural resources under the Maine Natural Resources Protection Act (NRPA) and the federal Clean Water Act.*

All MNRCP-funded projects are required to be permanently protected, which ensures that the aquatic resources within these project areas are not under threat from future development or other impacts. Further, MNRCP generally prioritizes projects that are located within statewide focus areas and/or adjacent to other conserved lands. This combination of attributes supports larger statewide goals of protecting large blocks of high value habitat and reducing impacts to important aquatic resources.

However, it is difficult to fully assess progress toward the goal of reducing cumulative adverse impacts to aquatic resources without regularly conducting a cumulative impact assessment for all impacts in the state, including for permitted projects that require compensatory mitigation, permitted projects that do not require compensatory mitigation, and projects that do not require state or federal permits at all (i.e., some activities that impact natural resources may be exempt from state and/or federal permitting). While MNRCP data can be used to assess impacts for projects that utilize the ILF program, permitted projects that perform permittee responsible mitigation are not the responsibility of the ILF program. The Corps

² Connors, B., J.L. DiFranco, D. Suitor. Evaluating Alternative Wetland Compensatory Mitigation Assessment Techniques. Maine Department of Environmental Protection. March 2023.

conducted an analysis in 2022 for projects needing federal permits impacting less than 15,000 square feet of freshwater wetlands (the DEP’s threshold for requiring compensation is 15,000 square feet; the Corps’ threshold for requiring compensation was 15,000 square feet until 2023 when it was reduced to 5,000 square feet) and determined that as much as 15 acres of freshwater wetlands may be lost each year from these “smaller” impact projects that do not require compensation. Further, development in uplands near aquatic resources, but not directly impacting them, can often proceed with no permitting at all (or just local permitting). It is well documented that development in uplands proximate to aquatic resources can adversely impact the functioning of those resources even if there are no direct impacts to the aquatic resources themselves. These types of impacts would also need to be factored into any such analysis of the cumulative adverse impacts to aquatic resources. No such statewide assessment has been completed or is contemplated. Should such an assessment be conducted in the future, data collected from MNRCP-funded projects will provide important information and context.

4. *Provide DEP and Corps permit applicants greater flexibility in compensating for adverse impacts to protected natural resources.*

In-lieu fee mitigation through MNRCP gives permit applicants, DEP, and the Corps another effective option to compensate for resource impacts, and one that has been used with increasing frequency. As noted above, DEP and the Corps estimate that approximately 90 to 95% of permitted projects with resource impacts in Maine currently compensate those impacts through the ILF program. In fact, the current Corps New England District Compensatory Mitigation Standard Operating Procedures (2024) specifically recommends use of mitigation banks and ILF programs, stating “When a mitigation bank or an ILF program is available, compensatory mitigation conducted using these options is considered preferable to PRM [permittee-responsible mitigation] alternatives....” This directive is due in part to the success of MNRCP, and other New England ILF programs, through the years. MNRCP has been used by permit applicants ranging from private landowners and institutions to utility and energy companies and transportation agencies. Table 10 below shows the sources of the \$40,074,154.71 of in-lieu fees paid into MNRCP from the program’s beginning through 2023.

Table 10. Sources of In-Lieu Fee Payments in Maine from 2008 through 2024

Impact Category	Wetland Credits Sold	Total Fees	Percent of Total	Number of Permits	Percent of Total Permits
Transportation	96.88	\$12,214,867.10	27.8%	97	19.7%
Energy supply/transmission	144.80	\$12,155,751.68	27.7%	93	18.9%
Residential/Commercial development	65.59	\$11,228,328.51	25.6%	197	40.0%
Educational/Health facility	27.50	\$4,574,784.21	10.4%	38	7.7%
Federal Government ¹	5.16	\$1,643,489.23	3.7%	5	1.0%
Municipal	5.33	\$980,620.37	2.2%	23	4.7%
Working waterfront ²	2.53	\$566,114.61	1.3%	20	4.1%
Recreation	1.87	\$286,811.85	0.7%	10	2.0%
Other	1.71	\$284,971.18	0.6%	10	2.0%
Total:	351.37	\$43,935,738.74	100.0%	493	100.0%

¹Federal Government includes projects conducted by federal agencies, primarily on federal property. Examples include fill impacts by the U.S Marine Corps and U.S. Navy and dredging impacts by the U.S. Army Corps of Engineers.

²Working waterfront includes piers, docks, boat ramps, marina expansions, retaining walls, shoreline stabilization, and other activities primarily associated with commercial development in waterfront areas.

As shown above, transportation and energy projects have accounted for the highest percentage of fees paid into the program, while residential/commercial development have accounted for the largest percentage of total number of permits. This indicates that while transportation and energy projects have fewer numbers of projects, they tend to be larger, resulting in more total wetland credits, and therefore the total fees are higher. Conversely, residential and commercial development projects tend to have smaller impacts, so while there are more permits issued for these projects, each permit is generally associated with a smaller number of wetland credits and consequently less fees.

Overall, MNRCP is providing applicants with greater flexibility in compensating for unavoidable project impacts. Private landowners often don't have suitable locations for on-site mitigation or the expertise to do their own mitigation and would have to hire consultants and contractors to carry out projects. While large entities such as energy companies or transportation departments still occasionally complete permittee-responsible mitigation for some of their projects, the in-lieu fee compensation offered through MNRCP often provides a more efficient and effective option when suitable on-site or other permittee-responsible mitigation projects are difficult to find or complete. Additionally, most permit applicants recognize that carrying out their own mitigation project will be time consuming, especially if they perform a restoration project that will require 5-10 years of post-construction monitoring. Applicants have generally found it easier to pay the in-lieu fees and transfer the mitigation responsibility.

5. *Achieve ecological success on a biophysical region basis by directing ILF funds to protected natural resource types and functions that are appropriate to the geographic service area, and by integrating ILF projects with other conservation activities whenever possible.*

In Maine, a series of 140 important Focus Areas of Statewide Ecological Significance, known as "Beginning with Habitat (BwH) Focus Areas," have been identified across the state. Each MNRCP Region contains multiple Focus Areas (see map in Appendix F). Proposed projects located within or adjacent to one of these Focus Areas generally receive higher scores for the Landscape Context criterion during review. Proposed projects are also evaluated based on whether they occur within or adjacent to Federal or State conservation lands, regional conservation lands, or municipal and private nonprofit conservation organization lands. Proposed projects near these areas generally score higher in Landscape Context. Proximity to habitat for rare, threatened, and endangered species, and proximity to mapped Significant Wildlife Habitat are also considered during project review. The majority of MNRCP projects contain priority habitats or habitat for priority species.

Table 11 shows the percentage of the 174 projects with MNRCP awards through the 2024 round that occur in priority conservation areas in Maine. Note that it is common for these Priority Areas to overlap. For example, a project may fall within a Statewide Habitat Focus area and be adjacent to state, federal, and/or private non-profit conservation lands.

Table 11. MNRCP Projects within the Major Priority Areas

Priority Area	% of Projects
Statewide Habitat Focus Area	45%
Within or Adjacent to Federal or State Conserved Lands	67%
Within or Adjacent to Regional, Local or Private Non-Profit Conservation Lands	74%
Containing Significant Wildlife Habitat or Habitat for Rare, Threatened, and Endangered Species ¹	58%

¹ Includes Inland and Tidal Waterfowl and Wading Bird Habitat and MDIFW-mapped rare, threatened and endangered species habitats.

A set of specific conservation objectives was developed for each MNRCP Region in the Compensation Planning Framework of the In-Lieu Fee Instrument (see Appendix G for MNRCP’s regional conservation objectives). While many of the regional objectives are closely linked to the focus areas, priority conservation areas, and habitats discussed above, several regions include conservation objectives that are specific to that region, including: restoration of marginal and non-productive farmland, fish passage in the Penobscot River or Kennebec River watershed, preservation of vernal pools and headwater streams, and restoration of coastal resources. As part of the 10-year update to the MNRCP Program Instrument, these region-specific conservation objectives are being updated and will be in use for future funding rounds.

7. Updates on Previously Funded Projects

Table 12 shows the progress of all awarded projects through 2024. Since the start of the program, 174 projects have been awarded funding. Of these, 136 have met all program requirements and are complete. Thirteen projects with restoration, enhancement, and/or creation have completed the construction portion of the project and are in the monitoring phase. These 13 projects are in various stages of monitoring, but all of the projects are currently tracking toward meeting performance standards, and none appear to be in danger of needing significant corrective actions in order to meet the project goals. The remaining 25 projects are in various stages of implementation. These projects are either in the process of setting up Project Agreements, developing restoration/enhancement or long-term management plans, or completing final implementation.

Table 12. MNRCP Award Progress To-Date

Progress-to-date	Number
Completed	136
In Monitoring Phase	13
In Progress	25
TOTAL:	174

In 2022, TNC began a process to evaluate MNRCP preservation sites that were awarded funds and protected in the early years of the program. The goal of this effort was to perform a basic assessment of each project site and determine if it was still being managed according to the terms of the MNRCP Project Agreement as

well as any management plans for the property. TNC started generally with the oldest projects with a plan to work toward the newer ones over time, recognizing that it would take multiple years to visit all the sites. The process began with a basic review of any relevant documents on file for the project, including the Project Agreement, restoration work plans, long-term management plans, easements, etc. TNC staff then reached out to each landowner to acquire any updated management plans and to generally discuss each site. A site visit was then performed to check conditions on the ground.

TNC visited 13 past project sites in 2022, covering most of the MNRCP awards from 2009 (the first year MNRCP awards were made) and a portion of the 2010 awards. In 2023, TNC visited 10 additional past project sites, covering the remaining MNRCP awards from 2009 and a portion of the 2010 awards. To improve efficiency, other nearby project sites that were funded in different years were also visited, including sites funded in 2011 and 2012. Details of these site visits can be found in previous annual reports.

In 2024, TNC visited 12 past project sites, including the remaining sites awarded in 2010 and a portion of the 2011 awards. To again improve efficiency, other adjacent or nearby project sites that were funded in different years (but greater than ~10 years ago) were also visited, including sites funded in 2012, 2013, and 2014. The 12 sites evaluated in 2024 are in 8 different towns, are stewarded by 7 different awardee organizations, and cover approximately 1,013 acres of protected land (see details in Table 12 below). One site without road access was not visited on the ground (2011- Mattawamkeag River/Eagle Pond - MDIFW, 2,452 acres in Drew Plantation), but a detailed interview was conducted with MDIFW staff.

Overall, results of the project reviews were very positive. Similar to what was found in 2022 and 2023, TNC found that regular site monitoring was occurring at most sites. Land trusts which are not accredited by the Land Trust Alliance and state agencies are less likely to perform formal annual monitoring, but often have informal “eyes on the ground,” particularly for sites or areas of sites with trails. Aquatic resources at the sites were in great shape, and the properties were being appropriately stewarded by the awardees. TNC was able to acquire updated versions of management plans for some sites; other sites do not have management plans (MNRCP did not require management plans for the first 3 years of awards).

At a site conserved with a conservation easement, TNC was able to have a good conversation with the awardee about MNRCP’s Riparian Habitat Management Guidelines, and they agreed to share these with the landowner before any future harvest (none is planned at this time; harvest was allowed in this project agreement as well as some agriculture use).

At a site that was also a wetland enhancement/creation site, TNC staff were able to take good notes on the status of the wetland features ~10 years post-implementation.

In one instance, evidence of ATV use was found on a snowmobile trail that traverses a wetland area; awardee staff and volunteers were not aware of this use as this was not a trail that is walked as part of informal monitoring. TNC had a good conversation about how to prevent ATV use by installing signage, connecting with the local snowmobile club that maintains the trail, and gating the trail in the non-winter season if necessary.

TNC learned that a wildfire had encroached onto one site from abutting land in 2022, and TNC was able to visit the area, assess plant regeneration (looking good) and impact to wetland buffers (minimal). The reviews and site visits generated several beneficial connections. Multiple sites were found to have healthy stands of ash trees, including in forested wetland habitats. Some of these sites are near known locations of the Emerald Ash Borer, an invasive insect that threatens to functionally extirpate ash in the northeast US. TNC staff were able to connect awardee staff with Maine Forest Service, which is providing

free treatment of ash “Preservation Patches” to maintain genetic diversity and seed-bearing, female ash trees. One site also appeared to meet criteria for potential release of natural enemies of Emerald Ash Borer, so TNC staff connected awardee staff with relevant Maine Forest Service staff for further conversation. Brown ash is a culturally important species for Wabanaki Nations, so protection of ash is of cultural as well as conservation concern.

In summary, the 2024 site visits provided an opportunity to meet new staff at the awardee organizations, ensure understanding and compliance with project agreements and management guidelines, discuss forest management and management challenges (e.g., wildfire, invasive species), and update files with the latest management plans.

Table 13 below provides a list of the sites assessed by TNC in 2024. TNC plans to continue monitoring additional sites in 2025.

Table 13. MNRCP past preservation sites visited in 2024

Project Title	Funding Round	Awardee	Region	Total Acres
Crooked River - Robie Meadows	2011	Western Foothills Land Trust	Southern Maine	82
Kanokolus Bog North	2010	Sebastiok Regional Land Trust	Central Interior & Midcoast	189
Little Cobbossee Lake - Oatway	2011	Kennebec Land Trust	Central Interior & Midcoast	90
Maquoit Bay - Henshaw	2010	Brunswick-Topsham Land Trust	Central Interior & Midcoast	237
Mattawamkeag River/Eagle Pond*	2011	Maine Dept. of Inland Fisheries & Wildlife	Central & Eastern Lowlands	2,452
McKenna - Whiskeag Creek	2010	Kennebec Estuary Land Trust	Central Interior & Midcoast	36
Moon Valley	2012	Western Foothills Land Trust	Southern Maine	15
Morse Pond - Collins	2010	Kennebec Estuary Land Trust	Central Interior & Midcoast	30
Morse Pond II	2012	Kennebec Estuary Land Trust	Central Interior & Midcoast	69
Morse Pond III	2013	Kennebec Estuary Land Trust	Central Interior & Midcoast	86
Morse Pond IV	2014	Kennebec Estuary Land Trust	Central Interior & Midcoast	75
Pisgah Hill Conservation Area - Hobson 2	2010	Royal River Conservation Trust	Central Interior & Midcoast	104
Total Acres (not including MDIFW project):				1,013

8. Internal Controls and Financial Reporting

TNC provided DEP with an Audited Financial Statement for the entire organization on January 3, 2025, as required by the contract between TNC and DEP. This financial statement covered fiscal year 2024, which ended on June 30, 2024. As an additional requirement of the contract between TNC and DEP, TNC has maintained the collateral which was posted in 2018 in the amount 105% of the agreed upon contract value of \$4,500,000. TNC provides DEP with quarterly statements documenting the market value of the posted collateral.

9. Program Updates

Restoration and Enhancement Projects

The Corps and DEP continue to put a strong emphasis on funding meaningful wetland restoration and enhancement projects to provide compensation for permitted impacts. Both federal and state regulation include a preference for restoration and enhancement projects as these types of project better address federal and state mitigation policies regarding “no net loss” of wetland functions and values. While 66 of the 174 total projects funded by MNRCP have included some amount of wetland restoration or enhancement, most of the *credits* produced by the program have been from preservation. Preservation mitigation is an acceptable form of mitigation for both MDEP and the Army Corps and helps to achieve other statewide conservation outcomes; however, preservation does not address “no net loss” policy goals. Restoration and enhancement results in a replacement of lost functions and values with the ultimate goal of maintaining functions and values at a regional scale over time. While preservation prevents future resource impacts, it does not result in a net *gain* of resource functions and values.

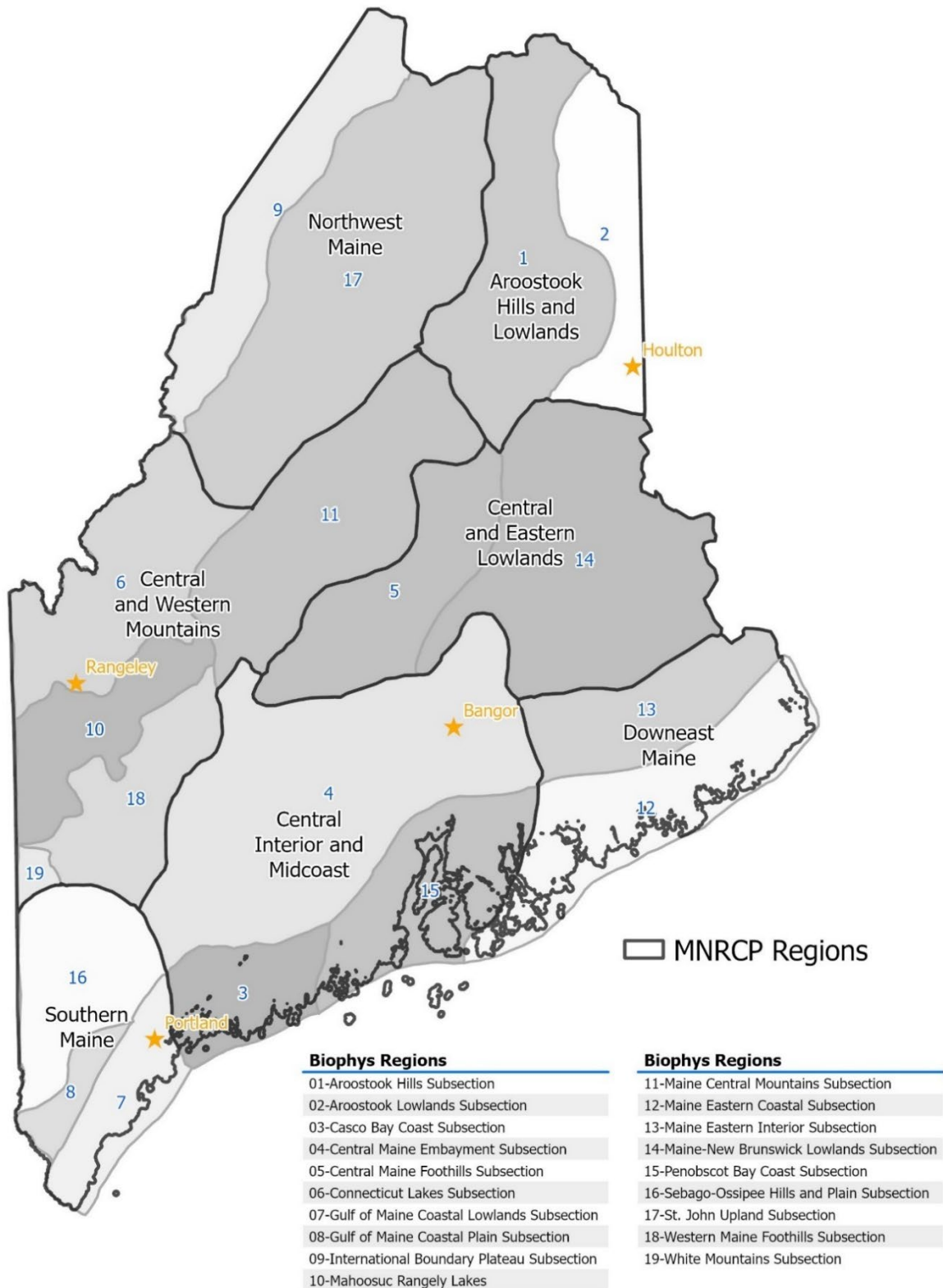
In 2024, MNRCP received fewer restoration proposals than in 2023, when 8 of the 11 awards were restoration or enhancement projects. Several Letters of Intent were received in 2024 for “preservation only” projects but it was determined through the initial reviews that these projects did not meet the agencies’ goals. Moving forward, the program will focus even more on restoration and enhancement projects and may only fund preservation projects in rare circumstances. TNC, DEP, and the Corps agreed that in 2025, proposed projects must include restoration, enhancement, or creation in order to receive funding. No proposals for “preservation only” will be accepted. The program will continue to assess how this shift affects the number and type of proposals received and funded, as well as the ability to award the money that is being collected for resource impacts in a timely manner. Continued collaboration between TNC, DEP, and the Corps will dictate how future funding rounds are operated.

Rivers, Streams and Brooks

In March 2020, the 129th Maine Legislature passed LD 1777, An Act to Add Rivers, Streams and Brooks to the Department of Environmental Protection’s Compensation Fee Program. This act established that DEP can now accept in lieu fee payments for impacts to rivers, streams and brooks, as defined under the Natural Resources Protection Act. DEP and TNC are currently in the process of setting up the program to sell stream credits and preparing a proposed amendment to the MNRCP Instrument to allow for the sale of stream credits. Because this amendment has not yet been approved, DEP is not able to sell stream credits. DEP expects that the amendment will be approved in time to allow the sale of stream credits in 2026. Once stream credits are sold, MNRCP will be seeking compensation projects that will provide compensation for those impacts. While MNRCP has traditionally been focused on wetlands and Significant Wildlife Habitat, the program may soon be specifically looking for stream restoration and conservation projects to provide compensation for any direct stream impacts that utilize the ILF program.

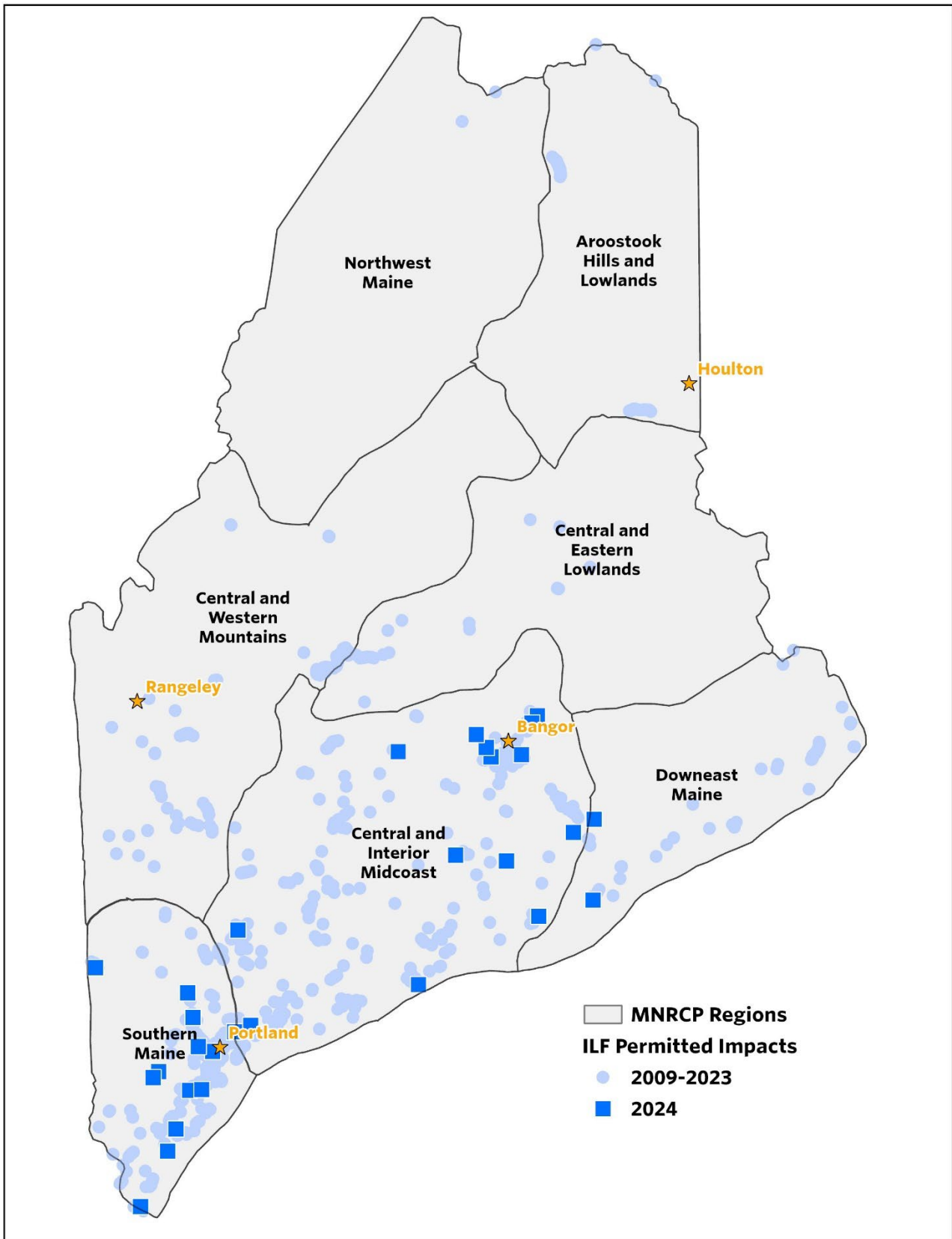
Appendix A

MNRCP Region Boundaries and Biophysical Subsections



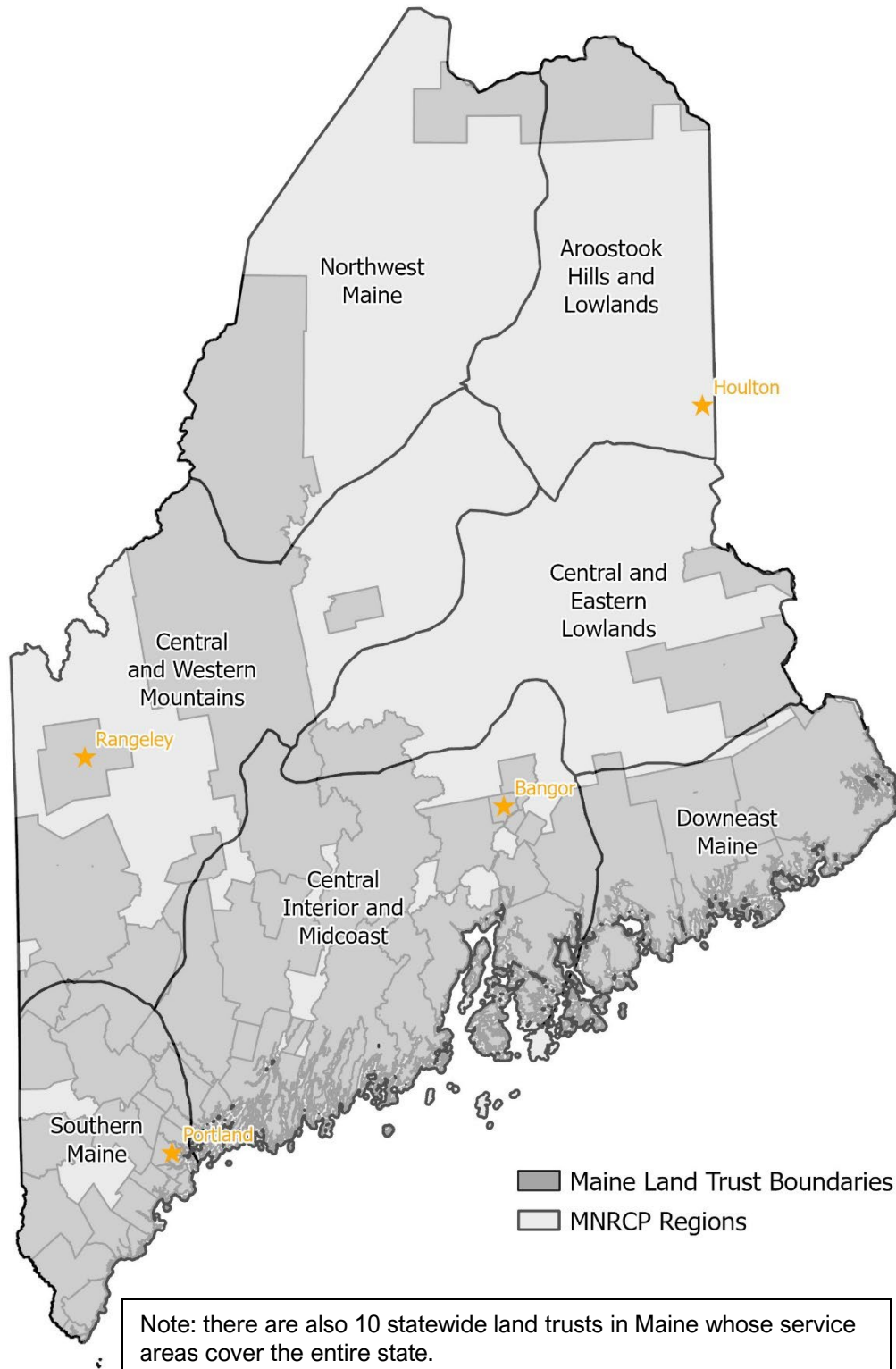
Appendix B

MNRCP In-Lieu Fee Permitted Impacts



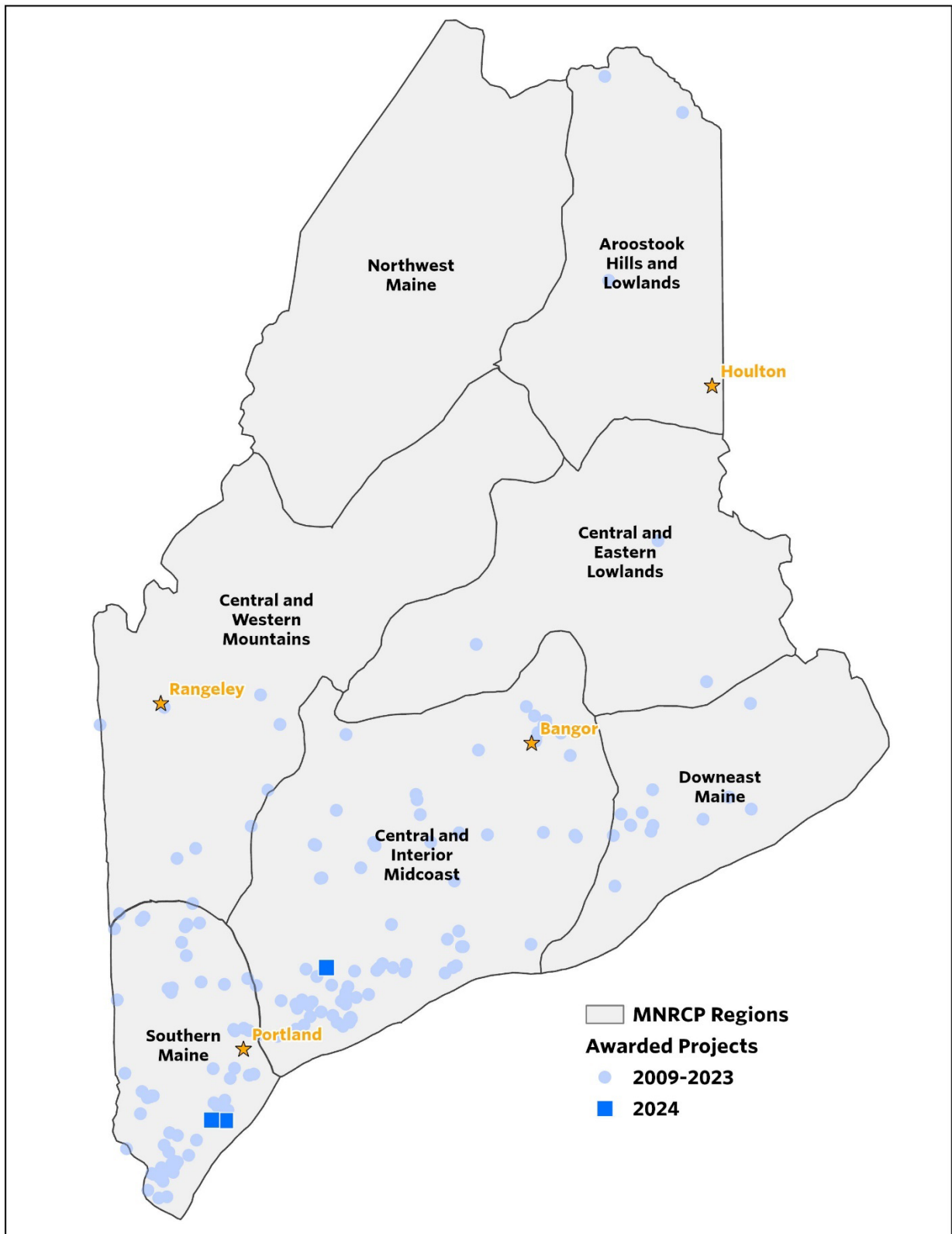
Appendix C

Maine Land Trust Service Areas



Appendix D

MNRCP Compensation Projects



Appendix E

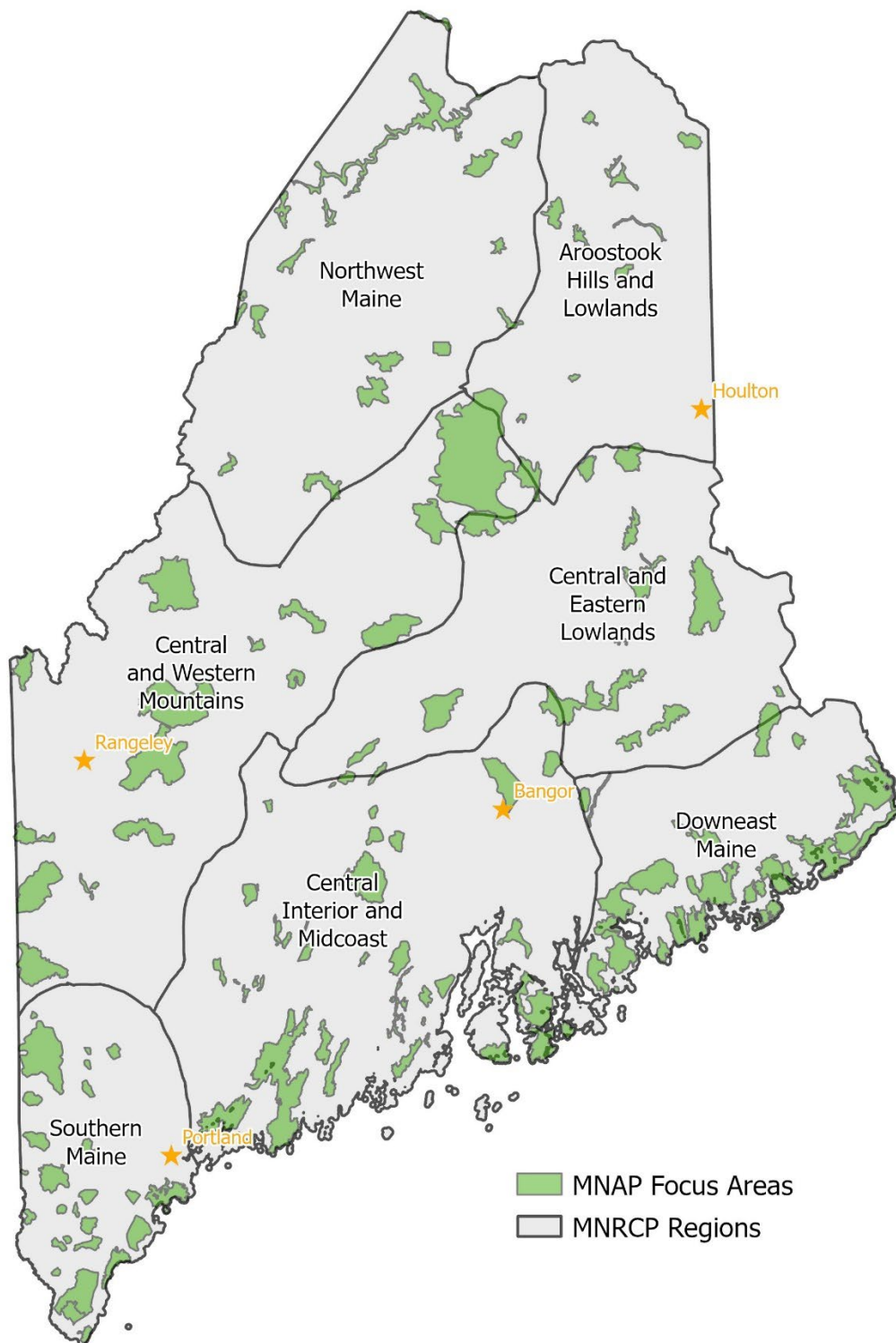
MNRCP Debit and Credit Summary

Region	Report Habitats	Debits	Credits	Balance
Aroostook Hills and Lowlands	Total	6.75	24.82	18.07
	Inland Waterfowl and Wading Bird Habitat (IWWH)	0.00	1.05	1.05
	Palustrine Emergent (PEM)	1.42	0.31	-1.12
	Palustrine Forested (PFO)	2.56	0.90	-1.67
	Palustrine Scrub-Shrub (PSS)	1.14	1.08	-0.06
	Palustrine Unconsolidated Bottom (PUB)	0.01	0.03	0.02
	Riverine (R)	0.65	0.00	-0.65
	Uplands (UP)	0.00	21.46	21.46
	Vernal Pool Critical Terrestrial Habitat (VPCTH)	0.96	0.00	-0.96
Central and Eastern Lowlands	Total	16.02	43.69	27.67
	Inland Waterfowl and Wading Bird Habitat (IWWH)	5.56	5.60	0.04
	Lacustrine Limnetic (L1)	0.00	0.80	0.80
	Lacustrine Littoral (L2)	0.01	0.00	-0.01
	Palustrine Emergent (PEM)	0.56	0.16	-0.41
	Palustrine Forested (PFO)	8.68	18.29	9.62
	Palustrine Scrub-Shrub (PSS)	0.82	10.66	9.84
	Uplands (UP)	0.00	8.18	8.18
	Vernal Pool Critical Terrestrial Habitat (VPCTH)	0.39	0.00	-0.39
Central and Western Mountains	Total	54.05	62.38	8.32
	Inland Waterfowl and Wading Bird Habitat (IWWH)	9.42	1.90	-7.52
	Lacustrine Limnetic (L1)	0.00	0.66	0.66
	Lacustrine Littoral (L2)	0.00	0.10	0.10
	Palustrine Emergent (PEM)	3.03	0.94	-2.09
	Palustrine Forested (PFO)	28.21	12.04	-16.17
	Palustrine Scrub-Shrub (PSS)	4.91	3.38	-1.53
	Palustrine Unconsolidated Bottom (PUB)	0.00	0.20	0.20
	Riverine (R)	0.03	0.09	0.06
	Uplands (UP)	0.00	36.32	36.32
	Vernal Pool (VP)	0.53	0.41	-0.12
	Vernal Pool Critical Terrestrial Habitat (VPCTH)	7.93	6.34	-1.59
Central Interior and Midcoast	Total	152.33	493.76	341.43
	Estuarine Intertidal (E2)	1.06	74.54	73.47
	Estuarine Subtidal (E1)	0.14	2.02	1.88
	Inland Waterfowl and Wading Bird Habitat (IWWH)	5.99	9.15	3.16
	Lacustrine Limnetic (L1)	0.01	0.00	-0.01
	Lacustrine Littoral (L2)	0.00	0.03	0.03
	Marine Intertidal (M2)	1.20	0.95	-0.25
	Marine Subtidal (M1)	1.13	0.04	-1.09
	Palustrine Aquatic Bed (PAB)	0.02	0.00	-0.02
	Palustrine Emergent (PEM)	23.53	15.34	-8.20
	Palustrine Forested (PFO)	44.90	108.17	63.27

	Palustrine Scrub-Shrub (PSS)	15.38	36.15	20.77
	Palustrine Unconsolidated Bottom (PUB)	0.00	1.74	1.74
	Riverine (R)	0.36	0.29	-0.07
	Tidal Waterfowl and Wading Bird Habitat (TWWH)	0.00	0.01	0.01
	Uplands (UP)	0.00	196.46	196.46
	Vernal Pool (VP)	12.58	1.74	-10.84
	Vernal Pool Critical Terrestrial Habitat (VPCTH)	46.02	47.15	1.12
Downeast Maine	Total	22.78	38.78	16.00
	Estuarine Intertidal (E2)	0.79	12.34	11.54
	Estuarine Subtidal (E1)	0.00	0.05	0.05
	Inland Waterfowl and Wading Bird Habitat (IWWH)	4.34	1.94	-2.39
	Marine Intertidal (M2)	0.94	0.00	-0.94
	Marine Subtidal (M1)	0.63	0.00	-0.63
	Palustrine Emergent (PEM)	2.46	1.51	-0.95
	Palustrine Forested (PFO)	7.78	3.59	-4.20
	Palustrine Scrub-Shrub (PSS)	2.39	2.63	0.24
	Palustrine Unconsolidated Bottom (PUB)	0.00	0.02	0.02
	Riverine (R)	0.07	0.03	-0.04
	Uplands (UP)	0.00	16.64	16.64
	Vernal Pool (VP)	0.04	0.02	-0.02
	Vernal Pool Critical Terrestrial Habitat (VPCTH)	3.34	0.00	-3.34
Northwest Maine	Total	0.32	0.00	-0.32
	Palustrine Scrub-Shrub (PSS)	0.32	0.00	-0.32
Southern Maine	Total	109.33	344.31	234.98
	Estuarine Intertidal (E2)	0.46	55.90	55.44
	Estuarine Subtidal (E1)	0.00	0.38	0.38
	Inland Waterfowl and Wading Bird Habitat (IWWH)	2.61	8.92	6.31
	Lacustrine Limnetic (L1)	0.15	0.99	0.84
	Lacustrine Littoral (L2)	0.01	1.47	1.45
	Marine Intertidal (M2)	3.76	0.00	-3.76
	Marine Subtidal (M1)	0.55	0.00	-0.55
	Palustrine (P)	0.74	0.00	-0.74
	Palustrine Emergent (PEM)	25.62	7.17	-18.45
	Palustrine Forested (PFO)	51.90	50.81	-1.09
	Palustrine Scrub-Shrub (PSS)	13.46	18.57	5.10
	Palustrine Unconsolidated Bottom (PUB)	3.60	0.49	-3.12
	Palustrine Unconsolidated Shore (PUS)	0.00	0.03	0.03
	Riverine (R)	0.23	0.10	-0.13
	Tidal Waterfowl and Wading Bird Habitat (TWWH)	0.03	0.00	-0.03
	Uplands (UP)	0.08	134.92	134.84
	Vernal Pool (VP)	0.11	3.08	2.97
	Vernal Pool Critical Terrestrial Habitat (VPCTH)	5.99	61.49	55.50

Appendix F

Maine Natural Areas Program Statewide Focus Areas



APPENDIX G

Compensation Planning Framework Summary of Conservation Objectives for each MNRCP Region

Aroostook Hills and Lowlands

- Encourage preservation projects, particularly in areas of projected development expansion, to ensure that the region's extensive aquatic resources remain intact and functional into the future.
- Pursue opportunities to restore marginal or non-productive agricultural land to priority resources.

Central and Eastern Lowlands

- Encourage preservation projects, particularly in areas of projected development expansion, to ensure that the region's extensive aquatic resources remain intact and functional into the future.
- Support efforts to restore fish passage in the Penobscot River watershed.

Central and Western Mountains

- Encourage preservation projects, particularly in areas of projected development expansion, to ensure that aquatic resources remain intact and functional into the future.
- Support efforts to restore fish passage in the Penobscot River watershed.
- Pursue opportunities to restore marginal or non-productive agricultural land to priority resources.

Central Interior and Midcoast

- Actively pursue opportunities to restore priority resource types, particularly coastal resources, as well as opportunities to restore marginal or non-productive agricultural land.
- Support efforts to restore fish passage in the Penobscot River watershed.
- Encourage preservation projects, particularly for vernal pools and headwater streams (1st and 2nd order), and in areas of projected development expansion, to ensure that the region's extensive aquatic resources remain intact and functional into the future.

Downeast Maine

- Encourage preservation projects, particularly in areas of projected development expansion, to ensure that aquatic resources remain intact and functional into the future.
- Pursue opportunities to restore priority resource types, particularly coastal resources.
- Support efforts to restore diadromous fish passage.

Northwest Maine

- Encourage preservation projects to ensure that the region's largely intact aquatic resources remain intact and functional into the future.

Southern Maine

- Actively pursue opportunities to restore priority resource types, particularly coastal resources, as well as opportunities to restore marginal or non-productive agricultural land.
- Encourage preservation projects, particularly for vernal pools and headwater streams (1st and 2nd order), and in areas of projected development expansion, to ensure that the region's remaining aquatic resources remain intact and functional into the future.

Appendix H

Complete List of all Permits Generating MNRCP Payments through 12/31/2024 by Region and Date

Region	Year	Applicant	Project Name	Township	Permit Numbers	Habitat category	Impact Type	Fee	Credits
Aroostook Hills and Lowlands	2011	Maine DOT	Route 1 - Van Buren	Van Buren	PBR 51316, NAE-2010-02342	Freshwater wetlands	Fill & Conversion	\$180,904.18	1.85
Aroostook Hills and Lowlands	2014	Town of Oakfield	South Oakfield Road Reconstruction	Oakfield	NAE-2013-01314	Freshwater wetlands	Fill	\$44,778.00	0.35
Aroostook Hills and Lowlands	2015	Town of Oakfield	South Oakfield Road Reconstruction amendment	Oakfield	NAE-2013-01314	Freshwater wetlands	Fill	\$7,215.32	0.06
Aroostook Hills and Lowlands	2017	Maine DOT	Route 11, Soucy Hill	T14 R6 WELS	NAE-2016-07108	Freshwater wetlands	Fill	\$467,409.00	3.15
Aroostook Hills and Lowlands	2023	MaineDOT – WIN#21736	Madawaska-Edmunston International Bridge	Madawaska	L-28697-TG-A-N, NAE-2020-01777	Freshwater wetlands	Fill	\$168,350.00	1.34
Central and Eastern Lowlands	2009	First Wind Energy, LLC	Stetson Mountain Wind Farm Transmission Line	Chester	L-23774-TH-B-N	Significant wildlife habitat	Conversion	\$8,072.00	0.39
Central and Eastern Lowlands	2010	First Wind Energy, LLC	Rollins Wind Power (Evergreen Wind Power III, LLC)	Winn	L-24402-IW-C-N	Significant wildlife habitat	Conversion	\$140,140.00	5.56
Central and Eastern Lowlands	2010	Town of Millinocket	Millinocket Municipal Airport	Millinocket	L-24248-TG-A-N, NAE-2008-01362	Freshwater wetlands	Fill	\$86,046.00	0.71
Central and Eastern Lowlands	2014	Bangor Hydro	Keene Road Substation Expansion	Chester	L-20972-TC-H-N, NAE-2008-3073-M1	Freshwater wetlands	Fill	\$62,958.90	0.49
Central and Eastern Lowlands	2015	Blue Sky West, LLC	Bingham Wind Power	Abbot	L-25973-TG-A-N, NAE-2013-01266	Freshwater & Significant wildlife habitat	Fill & Conversion	\$264,167.39	4.85
Central and Eastern Lowlands	2017	Lacroix/Weeks	Boardwalk	Willimantic	L-26910-2B-A-N	Freshwater wetlands	Fill	\$107.50	0.00
Central and Eastern Lowlands	2018	Hyponex Corporation	Bark Processing Facility Expansion	Medway	L-2701-TG-A-N, NAE-2017-322	Freshwater wetlands	Fill	\$176,418.00	1.39
Central and Eastern Lowlands	2020	BD Solar	Solar Energy Facility	Milo	L-22577-TE-C-N, NAE-2017-02518	Freshwater wetlands	Fill	\$102,315.00	0.81
Central and Eastern Lowlands	2021	Maine DG Solar Harmony, LLC	Harmony Solar	Harmony	L-28734-TH-B-N, NAE-2020-10777	Freshwater wetlands	Fill	\$178,671.00	0.86
Central and Eastern Lowlands	2021	Granger	Granger Boat Ramp	Willimantic	L-28994-2B-A-N	Freshwater wetlands	Fill	\$3,536.00	0.01
Central and Eastern Lowlands	2022	Milo Solar LLC	Solar Facility	Milo	L-29023-TH-C-M	Freshwater wetlands	Fill	\$177,267.00	0.95
Central and Western Mountains	2010	Record Hill, LLC	Record Hill Wind Project	Roxbury	NAE-2008-03763	Freshwater wetlands	Conversion	\$15,025.66	0.69
Central and Western Mountains	2010	Central Maine Power	Maine Power Reliability Project	Peru	L-24620-26-A-N, L-24620-TG-B-N,	Freshwater wetlands	Fill	\$3,950.00	0.02

					L-24620-VP-C-N, L-24620-IW-D-N, L-24620-L6-E-N, NAE-2008-03017				
Central and Western Mountains	2010	Maine DOT	Route 17 upgrades and scenic turnout	Township D	NAE-2010-00609	Freshwater wetlands	Fill	\$142,644.92	1.04
Central and Western Mountains	2010	Nextera Energy Maine Operating Services, LLC	FPL Energy Maine Hydro Upper Dam	Richardsontown Twp	NAE-2010-00197	Significant wildlife habitat	Fill	\$4,152.00	0.40
Central and Western Mountains	2011	Central Maine Power	Section 270 & Roxbury Substation	Rumford	L-24663-TF-B-N, NAE-2009-01866	Freshwater wetlands	Fill & Conversion	\$119,130.71	0.93
Central and Western Mountains	2012	Central Maine Power	Section 52 & 54 Rebuild/Fry Station Removal	Roxbury	NAE-2009-01866	Freshwater wetlands	Fill, conversion, temp matting	\$805.24	0.04
Central and Western Mountains	2013	Maine DOT	Martin Memorial Bridge	Rumford	L-255969-L6-A-N, NAE-2013-00601	Freshwater wetlands	Fill	\$10,195.00	0.03
Central and Western Mountains	2013	Saddleback Ridge Wind, LLC	Saddleback Ridge Wind project	Dixfield	NAE-2009-202517	Freshwater wetlands	Conversion	\$25,922.77	1.12
Central and Western Mountains	2014	Central Maine Power	Section 54 Transmission Line Improvements	Roxbury	L-26074-VP-C-N	Significant wildlife habitat	Conversion	\$50,969.00	0.66
Central and Western Mountains	2014	Central Maine Power	Section 54 Transmission Line Improvements	Byron	L-26074-VP-C-N	Significant wildlife habitat	Conversion	\$30,944.00	0.78
Central and Western Mountains	2014	Maine DOT	Martin Memorial Bridge Amendment	Rumford	L-25969-L6-E-N, NAE-2013-00601	Freshwater wetlands	Fill	\$19,515.00	0.07
Central and Western Mountains	2014	Town of Woodstock	Lake Christopher Dam Replacement	Woodstock	L-26030-2G-A-N	Freshwater wetlands	Fill	\$10,044.00	0.03
Central and Western Mountains	2015	Town of Woodstock	Lake Christopher Dam Replacement amendment	Woodstock	L-26030-B-N	Freshwater wetlands	Fill	\$602.64	0.00
Central and Western Mountains	2015	Blue Sky West, LLC	Bingham Wind Power	Bingham	L-25973-TG-A-N, NAE-2013-01266	Freshwater & Significant wildlife habitat	Fill & Conversion	\$519,877.61	19.28
Central and Western Mountains	2015	John and Karen Darling	Cedar Creek Subdivision Lot 5 Single Family Residence	Carrabassett Valley	L-217-TG-IM_N	Freshwater wetlands	Fill	\$64,126.00	0.22
Central and Western Mountains	2018	Donald Oakes	Cedar Creek Subdivision Lot 7 residence	Carrabassett Valley	L-217-TF-IY-M	Freshwater wetlands	Fill	\$1,734.00	0.01
Central and Western Mountains	2018	Maine DOT	Route 2 Reconstruction	Dixfield	L-27598-TB-B-N	Freshwater wetlands	Fill	\$6,182.00	0.02
Central and Western Mountains	2018	Maine DOT	Route 6 Bridge Replacement	Sapling Twp	NAE-2017-03081	Freshwater wetlands	Fill & Conversion	\$44,236.90	1.35
Central and Western Mountains	2019	Town of Rangeley	Rangeley Municipal Airport improvements	Rangeley	NAE-2017-02173, L-19580-TE-F-N	Freshwater wetlands	Fill and conversion	\$65,607.00	0.67
Central and Western Mountains	2019	Maine DOT	Route 4 Reconstruction Madrid to Phillips	Madawaska	NAE-2018-02856	Freshwater wetlands	Fill	\$152,878.11	1.21
Central and Western Mountains	2019	Town of Rumford	Rumford Business Park	Rumford	L-15734-TF-O-M, NAE-2002-01670	Freshwater wetlands	Fill	\$149,309.00	0.93

Central and Western Mountains	2020	Town of Jackman	Airport Vegetation Removal	Jackman	L-10521-VP-I-N	Significant wildlife habitat	Vegetation Removal	\$1,401.00	0.80
Central and Western Mountains	2021	Rumford Solar, LLC	Rumford Solar Array	Rumford	NAE-2020-310	Freshwater wetlands	Fill & Conversion	\$193,399.46	1.21
Central and Western Mountains	2021	ECA Solar, LLC	Bethel Solar Array	Bethel	L-28670-TG-B-N, NAE-2020-0079	Freshwater wetlands	Fill & Conversion	\$69,000.92	1.97
Central and Western Mountains	2021	Central Maine Power	New England Clean Energy Connect	No Town	L-27625-26-A-N, L-27625-TG-B-N, L-27625-2C-C-N, L-27625-VP-D-N, L-27625-IW-E-N, NAE-2017-01342	Freshwater & Significant wildlife habitat	Permanent Fill, Temporary Fill, Conversion	\$134,806.08	5.94
Central and Western Mountains	2021	Central Maine Power	New England Clean Energy Connect	No Town	L-27625-26-A-N, L-27625-TG-B-N, L-27625-2C-C-N, L-27625-VP-D-N, L-27625-IW-E-N, NAE-2017-01342	Freshwater & Significant wildlife habitat	Permanent Fill, Temporary Fill, Conversion	\$154,163.46	4.43
Central and Western Mountains	2021	Central Maine Power	New England Clean Energy Connect	No Town	L-27625-26-A-N, L-27625-TG-B-N, L-27625-2C-C-N, L-27625-VP-D-N, L-27625-IW-E-N, NAE-2017-01342	Freshwater & Significant wildlife habitat	Permanent Fill, Temporary Fill, Conversion	\$96,525.11	1.93
Central and Western Mountains	2021	Town of Jackman	Runway 13-31 Expansion	Jackman	L-15021-TH-L-N, L-10521-18-K-B, NAE-2002-00853-M4	Freshwater wetlands	Fill	\$175,011.00	1.10
Central and Western Mountains	2021	NRS Bethel Solar, LLC	Bethel Solar	Bethel	L-28609-TE-B-N	Freshwater wetlands	Grading	\$204,492.00	0.99
Central and Western Mountains	2022	Sunday River	Merrill skil lift and trails	Newry	L-22269-TF-N-N, NAE-2017-00676	Freshwater wetlands	Fill	\$8,298.25	0.04
Central and Western Mountains	2022	Tom Federle/Arctaris Saddleback Real Estate LLC	Arctaris Saddleback Real Estate LLC, Saddleback Parmachenee A-Frame Village	Dallas Plt	NAE-2021-01612	Freshwater wetlands	Fill	\$3,723.60	0.02
Central and Western Mountains	2022	Vincent Moschella, ECA Solar, LLC	Bethel Solar	Bethel	NAE-2020-00749MOD	Freshwater wetlands	Fill	\$8,089.00	0.06
Central and Western Mountains	2023	Scott Kelly/Boyne Resorts/Sugarloaf Mtn. Corp.	Sugarloaf West Mountain Expansion	Carrabassett Valley	L-217-26-JX-A/L-217-TG-JY-N/L-217-2C-JZ-N/L-217-LG-KA-N, NAE-2021-00994	Freshwater wetlands	Fill, Conversion	\$782,852.00	3.74
Central and Western Mountains	2023	Western Maine Renewables, LLC	Western Maine Renewable Energy Project – Windpower Project	Moscow	NAE-2020-00301	Freshwater wetlands	Fill	\$398,292.61	1.79

Central and Western Mountains	2023	Scott Kelley/Boyne Resorts, Sugarloaf Mountain Corp.	Scott Kelley/Boyne Resorts, Sugarloaf Mountain Corp.	Carrabassett Valley	L-216-26-JX / L-217-TG-JY-N / L-217-JZ-N / L-217-L6, NAE-2021-00994	Freshwater wetlands	Fill and Conversion	\$5,761.40	0.00
Central and Western Mountains	2023	Sunday River Skiway Corp.	Barker Express Chairlift	Newry	L-2974-TH-HE-N	Freshwater wetlands	Conversion	\$3,873.15	0.02
Central and Western Mountains	2023	Regional School Unit (RSU) #10 – c/o Deb Alden	RSU 10 Mountain Valley Community School	Mexico	L2012-22-C-A / TG-D-N, NAE-2023-00313	Freshwater wetlands	Fill	\$112,972.86	0.51
Central Interior and Midcoast	2009	Washburn & Doughty Associates	Washburn & Doughty Shipyard Expansion	Boothbay	L-20207-4E-C-N, L-20207-4E-E-M, NAE-2008-01157	Coastal wetlands	Fill	\$28,670.88	0.09
Central Interior and Midcoast	2009	Maine Yankee	Natural Resources Damages Restoration Plan & Settlement	Wiscasset		Groundwater		\$120,500.00	0.00
Central Interior and Midcoast	2009	Washburn & Doughty Associates	Washburn & Doughty Laydown Area	Boothbay	L-20207-4E-D-N, NAE-2008-01157	Coastal wetlands	Fill	\$58,121.00	0.18
Central Interior and Midcoast	2009	Hannaford Brothers Co.	Winthrop Hannaford Supermarket & Pharmacy	Winthrop	L-24222-TE-B-N, NAE-2007-03386	Freshwater wetlands	Fill	\$91,947.08	0.63
Central Interior and Midcoast	2009	Husson College	Husson Metting House and Access Road	Bangor	NAE-2008-2072	Freshwater wetlands	Fill	\$32,722.80	0.25
Central Interior and Midcoast	2009	Dirigo Pines Development Company	Dirigo Pines	Orono	L-17404-26-O-A	Freshwater wetlands	Fill	\$820.10	0.01
Central Interior and Midcoast	2009	City of Waterville	Messalonskee Trail	Waterville	L-24114-L6-A-N	Freshwater wetlands	Fill	\$12,233.00	0.08
Central Interior and Midcoast	2009	Bangor Hydro Electric Co.	Bangor Hydro Keene Rd Substation	Chester	L-20972-TC-F-N, NAE-2008-3073	Freshwater & Significant wildlife habitat	Fill & Conversion	\$107,972.80	5.81
Central Interior and Midcoast	2009	Town of Chebeague Island	Wharf Rd. Reconstruction	Yarmouth	L-24345-4E-A-N, NAE-2008-03395	Freshwater & coastal wetlands	Fill	\$12,940.62	0.03
Central Interior and Midcoast	2009	Washburn & Doughty Associates	Washburn & Doughty Drydock Platforms	Boothbay	L-20207-4E-F-N, NAE-2008-01157 mod 2	Coastal wetlands	Fill	\$1,336.00	0.00
Central Interior and Midcoast	2009	University of Maine, Orono	AEWC Building Expansion	Orono	L-19408-TC-BX-N	Freshwater wetlands	Fill	\$33,054.20	0.27
Central Interior and Midcoast	2009	Maine DOT	Route 1A reconstruction - 1	Ellsworth	PBR 47529, NAE-2008-03622	Freshwater wetlands	Fill	\$218,880.55	1.46
Central Interior and Midcoast	2009	Maine DOT	Route 1A reconstruction - 2	Ellsworth	PBR 47777, NAE-2009-00823	Freshwater wetlands	Fill	\$167,590.78	1.34
Central Interior and Midcoast	2009	University of Maine, Orono	AEWC Building Expansion Modification	Orono	L-19408-TC-CB-M	Freshwater wetlands	Fill	\$33,863.24	0.27
Central Interior and Midcoast	2010	Town of Chelsea	Chelsea Elementary School	Chelsea	L-24780-TE-A-N, NAE-2007-03342	Freshwater wetlands	Fill	\$144,145.00	0.93
Central Interior and Midcoast	2010	PS Bangor, LLC	Lowe's Home Improvement Center	Bangor	NAE-1991-02551-M1	Freshwater wetlands	Fill	\$42,623.24	0.34

Central Interior and Midcoast	2010	Town of Westport	Boat Launch realignment	Westport Island	NAE-2006-2777	Coastal wetlands	Fill	\$1,239.00	0.00
Central Interior and Midcoast	2010	Bigelow Laboratory	Bigelow Laboratory Research and Educational Facility	Boothbay	L-24771-4E-B-N	Coastal wetlands	Fill	\$4,906.00	0.01
Central Interior and Midcoast	2010	US Marine Corps	USMC Reserve Centers	Brunswick	L-20116-87-TG-N, L-20116-TG-N-N, NAE-2007-79	Freshwater wetlands	Fill	\$180,679.51	1.02
Central Interior and Midcoast	2010	Maine Maritime Academy	Retaining wall reconstruction	Castine	L-15887-4D-H-N	Coastal wetlands	Fill	\$6,589.20	0.02
Central Interior and Midcoast	2010	Central Maine Power	Maine Power Reliability Project	Cumberland	L-24620-26-A-N, L-24620-TG-B-N, L-24620-VP-C-N, L-24620-IW-D-N, L-24620-L6-E-N, NAE-2008-03017	Freshwater wetlands	Fill	\$1,269,746.00	6.84
Central Interior and Midcoast	2010	Central Maine Power	Maine Power Reliability Project	Lewiston	L-24620-26-A-N, L-24620-TG-B-N, L-24620-VP-C-N, L-24620-IW-D-N, L-24620-L6-E-N, NAE-2008-03017	Freshwater wetlands	Fill	\$208,512.00	0.89
Central Interior and Midcoast	2010	Central Maine Power	Maine Power Reliability Project	Warren	L-24620-26-A-N, L-24620-TG-B-N, L-24620-VP-C-N, L-24620-IW-D-N, L-24620-L6-E-N, NAE-2008-03017	Freshwater wetlands	Fill	\$7,621.00	0.04
Central Interior and Midcoast	2010	University of Maine, Orono	Bike Path Extension	Orono	L-19108-TE-CI-N	Freshwater wetlands	Fill	\$3,504.00	0.03
Central Interior and Midcoast	2011	City of Brewer	Brewer Industrial Park road extension	Brewer	NAE-2010-02069, L-18110-TG-C-M	Freshwater wetlands	Fill	\$3,606.20	0.03
Central Interior and Midcoast	2011	University of Maine, Orono	Footbridge on Multi-use trail	Orono	L-19408-TE-CK-N, NAE-1997-02618-M3	Freshwater wetlands	Fill	\$1,401.60	0.01
Central Interior and Midcoast	2011	MSB Leasing, Inc.	Machias Savings Bank	Brewer	NAE-2008-0280	Freshwater wetlands	Fill	\$37,681.72	0.57
Central Interior and Midcoast	2011	Maine DOT	Downeast Rail Trail, Ellsworth	Bangor	PBR 49618, NAE-2010-00470	Freshwater wetlands	Fill	\$77,535.92	0.58
Central Interior and Midcoast	2011	Hammond Lumber Company	Bangor Expansion	Bangor	NAE-2005-2842	Freshwater wetlands	Fill	\$11,828.92	1.27
Central Interior and Midcoast	2011	Gary and Kathryn Simel	Meduncook Bay Subdivision, Lot 18	Cushing	L-21920-TE-V-N, NAE-2010-02228	Freshwater wetlands	Fill	\$5,211.00	0.03
Central Interior and Midcoast	2011	MaineGeneral Medical Center	MaineGeneral New Regional Hospital	Augusta	L-122659-TG-J-N, NAE-2009-02019	Freshwater wetlands	Fill	\$323,247.00	2.06
Central Interior and Midcoast	2011	Fisherman Island, LLC	Breakwater, pier, float	Boothbay	L-24619-4P-A-N, NAE-2009-01465	Coastal wetlands	Fill	\$5,221.00	0.05

Central Interior and Midcoast	2011	Maine DOT	Route 219 Leeds	Leeds	NAE-2011-00678, PBR 51316	Freshwater wetlands	Conversion	\$12,229.67	0.53
Central Interior and Midcoast	2011	Verso Paper	Buckport Renewable Energy Project	Bucksport	NAE-2010-2223	Coastal wetlands	Fill	\$62,457.48	0.22
Central Interior and Midcoast	2011	Labree's, Inc.	Labree's Bakery expansion	Old Town	NAE-1992-1521-M1	Freshwater wetlands	Fill	\$22,297.12	0.18
Central Interior and Midcoast	2011	Maine DOT	Route 15 - Orrington	Orrington	NAE-2011-01279	Freshwater wetlands	Fill & Conversion	\$83,787.13	0.65
Central Interior and Midcoast	2012	Maine DOT	Route 9 Lisbon-Sabattus Bridge Replacement	Lisbon	PBR 47669	Freshwater wetlands	Fill	\$8,382.00	0.03
Central Interior and Midcoast	2012	Greely Associates	Thomaston Commons	Thomaston	L-25428-TG-B-N, NAE-2011-01423	Freshwater wetlands	Fill	\$402,454.78	2.33
Central Interior and Midcoast	2012	Central Maine Motors-T, Inc.	Central Maine Toyota expansion	Waterville	L-16673-TE-P-N, NAE-2011-00918	Freshwater wetlands	Fill	\$127,370.53	0.77
Central Interior and Midcoast	2012	Husson University	Husson University Parking Lot	Bangor	NAE-2008-2072-M1	Freshwater wetlands	Fill	\$20,476.46	0.15
Central Interior and Midcoast	2012	Central Maine Power	Maine Power Reliability Project Revision 7	Lewiston	L-24620-TG-T-N	Freshwater wetlands	Fill	\$907.20	0.03
Central Interior and Midcoast	2012	Town of Norridgewock	Central Maine Regional Airport	Norridgewock	L-21770-TH-G-N, NAE-2007-02622	Freshwater & coastal wetlands	Fill	\$153,540.00	0.96
Central Interior and Midcoast	2012	Maine DOT	Ellsworth Route 180 Relocation	Ellsworth	L-25579-TG-A-N, NAE-2008-02119	Freshwater wetlands	Fill	\$300,822.34	6.91
Central Interior and Midcoast	2012	Mary Ballard Trust	Shoreline Stabilization	Saint George	NAE-2012-00467	Coastal wetlands	Fill	\$2,199.38	0.01
Central Interior and Midcoast	2012	Machias Savings Bank	Machias Savings Bank Brewer Amendment	Brewer	NAE-2008-0280 mod	Freshwater wetlands	Fill	\$12,000.00	0.57
Central Interior and Midcoast	2013	Sleepy Hollow Farm, LLC	Caldwell Island Fire Pond	Saint George	L-25238-TE-F-N	Freshwater wetlands	Dredging	\$47,945.69	0.28
Central Interior and Midcoast	2013	Maine DOT	Orono Stillwater/Forest Avenue Reconstruction	Orono	NAE-2012-00819	Freshwater wetlands	Fill & Conversion	\$62,094.35	0.50
Central Interior and Midcoast	2013	Tom Clemons/J. Lloyd Thompson	Pier,Ramp & Float	Harpswell	NAE-2012-00332	Coastal wetlands	Shading	\$1,004.00	0.00
Central Interior and Midcoast	2013	Town of North Haven	Beach Bridge Reconstruction	North Haven	L-25660-4E-A-N, NAE-2011-01123	Coastal wetlands	Fill	\$59,470.60	0.17
Central Interior and Midcoast	2013	Maine DOT	Route 136 Stabilization	Durham	L-25736-L6-A-N, NAE-2012-01566	Freshwater wetlands	Fill	\$94,540.32	5.38
Central Interior and Midcoast	2013	Black Bear Hydro Partners, LLC	Stillwater Dam Upgrade	Old Town	NAE-2010-02057	Freshwater wetlands	Flooding/ Conversion	\$11,657.23	0.57
Central Interior and Midcoast	2013	Maine DOT	Mill Bridge Replacement	Islesboro	NAE-2012-00981	Coastal wetlands	Fill	\$4,088.08	0.03
Central Interior and Midcoast	2013	Maine DOT	I-95 Exit 113 Reconstruction	Augusta	L-20756-TG-M-N, NAE-2010-00603	Freshwater wetlands	Fill & Clearing	\$158,594.06	1.01
Central Interior and Midcoast	2013	Maine DOT	Yarmouth I-295 Park & Ride	Yarmouth	L-25825-2G-A-N, NAE-2012-02468	Freshwater wetlands	Fill & Conversion	\$335,213.44	7.06
Central Interior and Midcoast	2013	Maine DOT	Kennebec Bridge Replacement Route 197	Dresden	L-25721-4E-A-N, L-25721-2G-B-N, NAE-2011-01991	Freshwater & coastal wetlands	Fill & Conversion	\$151,518.00	0.83

Central Interior and Midcoast	2013	Town of Lisbon	Androscoggin River Trail	Lisbon	L-25298-VP-B-N, NAE-2011-00674	Freshwater wetlands	Fill & Conversion	\$54,827.00	0.69
Central Interior and Midcoast	2013	Bath Iron Works	Pier 4 Riprap Blanket	Bath	L-14787-4E-AL-N	Coastal wetlands	Fill	\$55,037.00	0.16
Central Interior and Midcoast	2013	Dysart's Realty, Inc	Cold Brook Business Park	Hermon	L-19984-TE-L-N	Freshwater wetlands	Fill	\$84,290.90	0.62
Central Interior and Midcoast	2013	Blue Hill Country Club	Shoreline Stabilization	Blue Hill	L-25748-4D-C-N	Coastal wetlands	Fill	\$8,991.00	0.03
Central Interior and Midcoast	2014	Central Maine Power	MPRP Revision 9	No Town	L-24620-TG-AB-N	Freshwater wetlands	Fill	\$1,176.00	0.00
Central Interior and Midcoast	2014	Central Maine Power	MPRP Revision 9	No Town	L-24620-TG-AB-N	Freshwater wetlands	Fill	\$7,089.50	0.04
Central Interior and Midcoast	2013	Auburn Business Development	Auburn Industrial Subdivision	Auburn	L-25043-TG-C-N, NAE-2006-02238	Freshwater wetlands	Fill	\$129,452.37	0.78
Central Interior and Midcoast	2013	Summit Natural Gas	Take out Station	Pittston	L-26050-TE-A-N, NAE-2013-01618	Freshwater wetlands	Fill	\$80,560.00	0.49
Central Interior and Midcoast	2014	Knox County Commission	Knox County Airport Safety Improvements	Owls Head	L-18477-TF-Y-N, NAE-2013-00652	Freshwater wetlands	Fill	\$24,637.82	0.14
Central Interior and Midcoast	2014	Pen Bay Healthcare	Pen Bay Medical Center Expansion	Rockport	NAE-2011-02519	Significant wildlife habitat	Fill	\$45,291.40	1.81
Central Interior and Midcoast	2014	Maine Turnpike Authority	Exit 80 Interchange	Lewiston	NAE-2011-02505	Freshwater wetlands	Fill	\$95,836.74	0.62
Central Interior and Midcoast	2014	Central Maine Power	Lakewood Substation and Sections 241 & 264	Cornville	L-26075-TG-A-N, NAE-2013-0205	Freshwater wetlands	Fill & Conversion	\$83,501.75	4.25
Central Interior and Midcoast	2014	Central Maine Power	Section 48 Transmission Line Rebuild	Thomaston	L-26309-IW-B-N	Significant wildlife habitat	Fill	\$4,608.00	0.04
Central Interior and Midcoast	2014	Central Maine Power	MPRP Revision 9B	Livermore Falls	L-24620-AF-N	Freshwater wetlands	Fill	\$315.92	0.01
Central Interior and Midcoast	2014	Maine DOT	South Bristol Bridge Replacement	South Bristol	NAE-2013-02561	Coastal wetlands	Fill	\$58,267.00	0.17
Central Interior and Midcoast	2014	Central Maine Power	Section 5A Line Rebuild	Corinna	L-25608-IW-B-N	Significant wildlife habitat	Fill & Conversion	\$21,791.00	0.29
Central Interior and Midcoast	2014	Maine DOT	Route 1 Reconstruction	Warren	NAE-2013-02395	Freshwater wetlands	Fill	\$83,082.57	0.43
Central Interior and Midcoast	2014	Central Maine Power	Lewiston Loop Modification	Auburn	L-25129-TF-C-M, L-25129-VP-D-M, NAE-2010-02263	Freshwater & Significant wildlife habitat	Fill & Conversion	\$52,282.00	1.52
Central Interior and Midcoast	2015	Maine DOT	Wadsworth Street Bridge Replacement	Thomaston	NAE-2014-01375	Coastal wetlands	Fill	\$118,464.00	0.34
Central Interior and Midcoast	2015	Sprague Operating Resources, LLC	Storage area/Dredge spoil disposal	Searsport	L-20220-TE-F-N, NAE-2000-00269	Freshwater wetlands	Fill	\$129,842.00	0.80
Central Interior and Midcoast	2015	Robert and Nancy King	Shoreline stablization & marsh restoration	Brunswick	L-26631-4D-A-N	Coastal wetlands	Fill	\$21,944.00	0.06
Central Interior and Midcoast	2015	Town of Dresden	Dresden Boat Launch	Dresden	L-26700-4E-A-N, NAE-2015-01236	Freshwater wetlands	Fill	\$15,682.00	0.05
Central Interior and Midcoast	2015	Eric & Tracy Weinrich	Weinrich Shoreline Stabilization	Yarmouth	L-21751-4D-C-N	Coastal wetlands	Fill	\$5,434.00	0.01

Central Interior and Midcoast	2015	Clarence & Bobbi Jo Gowell	Gowell's Store	Litchfield	L-25771-TE-C-N, NAE-2012-01908	Freshwater wetlands	Fill	\$110,823.39	0.67
Central Interior and Midcoast	2016	Walter & Helen Norton	Coastal Shoreline Stabilization	Harpswell	L-25829-4D-E-N	Coastal wetlands	Fill	\$24,647.00	0.07
Central Interior and Midcoast	2016	Leland Southport, LLC	Shoreline Stabilization & Boathouse repair	Southport	L-26787-4E-C-N	Coastal wetlands	Fill	\$6,580.00	0.02
Central Interior and Midcoast	2016	Zareen Taj Mirza	Mirza Coastal Rip Rap	Northport	L-26587-4P-B-N	Coastal wetlands	Fill	\$7,636.80	0.02
Central Interior and Midcoast	2016	Maine DOT	Trafton Road Interchange	Waterville	L-26980-TG-A-N, NAE-2013-01143	Freshwater wetlands	Fill	\$329,828.00	1.97
Central Interior and Midcoast	2016	Chebeague Island Boat Yard, Inc	Chebeague Island Boat Yard Pier Modification	Chebeague Island	L-27023-4P-A-N, NAE-2008-02464	Coastal wetlands	Fill & Shading	\$1,353.13	0.03
Central Interior and Midcoast	2016	Dennis Beverage Company	Parking Lot/Building Expansion	Hampden	L-25291-TF-D-N	Freshwater wetlands	Fill	\$96,246.00	0.76
Central Interior and Midcoast	2016	MRC-Fiberight	Access Road	Hampden	L-26497-TG-C-M, NAE-2015-1190-M1	Freshwater wetlands	Fill	\$87,600.00	0.69
Central Interior and Midcoast	2016	Coastal Maine Botanical Society	Phase I Expansion	Boothbay	L-21490-TG-L-N, NAE-2016-00346	Freshwater wetlands	Fill	\$139,423.00	1.88
Central Interior and Midcoast	2017	Maine DOT	Sebasticook River Bridge Replacement	Pittsfield	NAE-2016-01344	Freshwater wetlands	Fill & Conversion	\$56,589.60	0.46
Central Interior and Midcoast	2017	Greenhead Lobster, LLC	Greenhead Lobster Dock	Stonington	L-022322-4P-B-N	Coastal wetlands	Fill	\$24,641.76	0.09
Central Interior and Midcoast	2017	James Pepin	Green Meadow Grove Subdivision	Sidney	L-24374-TE-G-N	Freshwater wetlands	Fill	\$64,304.89	0.39
Central Interior and Midcoast	2017	Lewiston Public Schools	Elementary school & high school athletic fields	Lewiston	L-18581-Tg-K-N, NAE-2016-00906	Freshwater wetlands	Fill	\$140,162.00	0.85
Central Interior and Midcoast	2017	Municipal Review Committee, Inc/Fiberight	Utility Corridor, Hampden	Hampden	L-26497-TG-C-M, NAE-2015-1190-M2	Freshwater wetlands	Fill	\$72,124.00	0.57
Central Interior and Midcoast	2017	Benjamin Carey	Shoreline Stabilization	Brunswick	L-27186-4D-D-N	Coastal wetlands	Fill	\$25,060.00	0.07
Central Interior and Midcoast	2017	Municipal Review Committee, Inc/Fiberight	Fiberight Solid Waste Facility	Hampden	L-26497-TG-C-M, NAE-2015-1190-M1	Freshwater wetlands	Fill	\$131,400.00	1.03
Central Interior and Midcoast	2017	Alexander & David Watson	Watson pier system	Cushing	NAE-2017-00759	Coastal wetlands	Propeller scour	\$1,878.00	0.03
Central Interior and Midcoast	2017	Maine Community College System	KVCC Electrical Line Worker Training Area	Fairfield	L-20415-TE-G-N, NAE-2016-02356	Freshwater wetlands	Fill	\$2,098.75	0.01
Central Interior and Midcoast	2018	Ken Stewart-Eastern River Marine Services	Eastern River Boat Ramp	Dresden	L-27192-4E-A-N	Freshwater wetlands	Fill	\$4,066.00	0.01
Central Interior and Midcoast	2018	Cushing Family Corp.	Colonial Heights Subdivision Phase 3	Hampden	L-21628-TE-C-N, NAE-2003-2569-M2	Freshwater wetlands	Fill	\$6,097.00	0.05
Central Interior and Midcoast	2018	RFJ-Morin Brick, LLC	Morin Brick Mitigation Modification	Auburn	NAE-2003-00931-M	Freshwater wetlands	Fill	\$16,465.00	0.10

Central Interior and Midcoast	2018	Waldo County General Hospital	Emergency Dept. Addition and Parking	Belfast	L-19793-TE-G-N	Freshwater wetlands	Fill	\$209,971.00	1.30
Central Interior and Midcoast	2018	Town of Long Island	Mariner's Wharf Expansion Phase I	Long Island	NAE-2017-01096	Coastal wetlands	Shading	\$1,215.07	0.03
Central Interior and Midcoast	2018	William Zimmerman	Zimmerman Pier Extension	Portland	NAE-2006-03673-A2	Coastal wetlands	Filling, Shading, Scouring	\$1,346.00	0.01
Central Interior and Midcoast	2018	Midcoast Regional Redevelopment Authority	Brunswick Executive Airport Modifications	Brunswick	L-20116-VP-AI-N, L-20116-TF-AH-N	Significant wildlife habitat	Conversion	\$78,266.00	4.34
Central Interior and Midcoast	2018	City of Belfast	Belfast Municipal Airport Taxiway	Belfast	L-21771-TG-I-N, NAE-2018-01746	Freshwater wetlands	Fill	\$70,078.00	0.43
Central Interior and Midcoast	2019	Maine Turnpike Authority	Exit 103 Open Road Tolling Project	West Gardiner	PBR-67157, NAE-2018-02510	Freshwater wetlands	Fill	\$102,031.28	0.62
Central Interior and Midcoast	2019	Central Maine Power	Rebuild Sections 241,281, & 38	Fairfield	L-27147-IW-C-N	Significant wildlife habitat	Fill & Conversion	\$63,549.88	2.79
Central Interior and Midcoast	2019	FW Webb Company	New Warehouse/Wholesale Facility	Hampden	L-20555-TE-F-B, NAE-2018-1738	Freshwater wetlands	Fill	\$66,185.00	0.26
Central Interior and Midcoast	2019	Island Park Homeowners Association	Island Park Bridge Pier Repair	Winthrop	L-27942-2B-B-N, NAE-2017-02033	Freshwater wetlands	Fill	\$3,393.00	0.01
Central Interior and Midcoast	2019	Maine DOT	Route 175 Bridge Replacement	Brooklin	NAE-2018-02064	Coastal wetlands	Fill	\$21,735.00	0.08
Central Interior and Midcoast	2019	Craig & Denise Benson	Benson pier extension, ramp & floats	Yarmouth	L-28115-4P-A-N, NAE-20056-00236-Mod	Coastal wetlands	Shading	\$8,394.00	0.02
Central Interior and Midcoast	2019	Bath Iron Works	Mooring Dolphins	Bath	L-14787-4P-AT-N, NAE-2018-02878	Coastal wetlands	Fill	\$1,316.72	0.00
Central Interior and Midcoast	2019	Running Tide Technologies, Inc.	Intake/Outfall	Harpswell	L-28109-4E-A-N, NAE-2018-03096	Coastal wetlands	Fill	\$457.00	0.00
Central Interior and Midcoast	2019	MB Bark	Solid Waste Facility Expansion	Pownal	L-19467-TG-C-N, NAE-2018-00135	Freshwater wetlands	Fill	\$101,505.00	0.62
Central Interior and Midcoast	2019	Pen Bay Medical Center	Medical Office Building	Rockport	L-746-TE-V-N	Freshwater wetlands	Fill	\$77,115.85	0.45
Central Interior and Midcoast	2019	Braden & Martha Bohrmann	Bohrmann pier, ramp & float	Yarmouth	NAE-2019-00095	Coastal wetlands	Chain Sway	\$774.00	0.00
Central Interior and Midcoast	2019	Maine DOT	Eddy Road Stabilization	Edgecomb	NAE-2018-01076	Coastal wetlands	Fill	\$6,256.00	0.02
Central Interior and Midcoast	2019	Mark Maloney	Maloney Pier System	Yarmouth	NAE-2018-02706	Coastal wetlands	Shading	\$3,526.00	0.01
Central Interior and Midcoast	2019	Peter & Lori Anastos	Residential Pier System modification	Yarmouth	NAE-2004-04265-Mod	Coastal wetlands	Shading	\$1,844.70	0.01
Central Interior and Midcoast	2019	Maine DOT	Route 238 Thompsons Bridge Replacement	Southport	NAE-2019-00477	Coastal wetlands	Fill	\$23,069.00	0.07

Central Interior and Midcoast	2019	The Chewonki Foundation, Inc.	School/Camp Expansion	Wiscasset	L-19603-VP-E-N	Significant wildlife habitat	Fill & Conversion	\$102,962.03	0.60
Central Interior and Midcoast	2020	Dennis Diesel	Pier, ramp and float	Saint George	NAE-2019-01715	Coastal wetlands	Shading	\$2,595.15	0.01
Central Interior and Midcoast	2020	Rosalind M. Harris Revocable Trust	Shoreline Stabilization	Freeport	L-28282-4D-E-N	Coastal wetlands	Fill	\$3,707.46	0.01
Central Interior and Midcoast	2020	Auburn-Lewiston Municipal Airport	Airport Improvements	Auburn	L-6634-TG-T-N, NAE-2006-03082-MOD	Freshwater wetlands	Fill	\$24,713.64	0.15
Central Interior and Midcoast	2020	Anne Christine Allen Revocable Trust	Shoreline Stabilization	Islesboro	L-28467-4D-A-N	Coastal wetlands	Fill	\$9,990.00	0.03
Central Interior and Midcoast	2020	Jeffrey Ashey	Jeff's Catering & Event Center Expansion	Brewer	L-00026-TE-K-N, NAE-2000-613-M1	Freshwater wetlands	Fill	\$2,208.00	0.08
Central Interior and Midcoast	2020	Town of Yarmouth	Yarmouth Elementary School Expansion	Yarmouth	L-16850-TG-I-N, NAE-2019-03233	Freshwater wetlands	Fill	\$30,788.00	0.16
Central Interior and Midcoast	2020	Maine DOT	I-95 Bridge Replacements	Hampden	NAE-2019-03288	Freshwater wetlands	Fill & Conversion	\$77,287.00	2.19
Central Interior and Midcoast	2020	PMP Realty, LLC	Libby Hill Business Park Structure Addition	Gardiner	L-19861-39-Q-B, L-19861-TG-R-N, L-19861-TG-S-N, L-1981-26-T-A, NAE-1999-00301	Freshwater wetlands	Fill	\$56,059.90	0.34
Central Interior and Midcoast	2020	Aaron Turkel/Hermitage Clark Shore LLC	Crib supported pier, ramp, float	Harpswell	NAE-2019-02071	Coastal wetlands	Shading	\$186.24	0.00
Central Interior and Midcoast	2020	Central Maine Power Company	Bowman Street Substation expansion	Farmingdale	L-28672-TE-A-N, NAE-2020-00888	Freshwater wetlands	Fill	\$80,218.06	0.49
Central Interior and Midcoast	2020	A & B Rentals, LLC	Monhegan Boat Line Pier improvements	Saint George	L-22291-4P-C-N	Coastal wetlands	Fill	\$12,663.70	0.04
Central Interior and Midcoast	2021	City of Bangor	Trail V Project	Bangor	L-27695-VP-A-N, NAE-2015-165	Significant wildlife habitat	Fill	\$93,706.00	0.26
Central Interior and Midcoast	2021	Central Maine Power	New England Clean Energy Connect	No Town	L-27625-26-A-N, L-27625-TG-B-N, L-27625-2C-C-N, L-27265-VP-D-N, L-27265-IW-E-N, NAE-2017-01342	Freshwater & Significant wildlife habitat	Permanent Fill, Temporary Fill, Conversion	\$310,713.91	1.72
Central Interior and Midcoast	2021	Central Maine Power	New England Clean Energy Connect	No Town	L-27625-26-A-N, L-27625-TG-B-N, L-27625-2C-C-N, L-27625-VP-D-N, L-27625-IW-E-N, NAE-2017-01342	Freshwater & Significant wildlife habitat	Permanent Fill, Temporary Fill, Conversion	\$2,350,439.81	28.62

Central Interior and Midcoast	2021	Mark Marsters	Coastal shoreline stabilization	Harpwell	L-28645-4D-B-N, NAE-2019-01207 MOD1	Coastal wetlands	Fill	\$6,579.00	0.02
Central Interior and Midcoast	2021	Robert and Nancy King	Robert and Nancy King access road	Brunswick	L-26631-TE-K-N, NAE-2015-00459-MOD	Freshwater wetlands	Fill	\$2,351.00	0.01
Central Interior and Midcoast	2021	Central Maine Power	Section 28-Massachusetts Island Pole Replacement	Newcastle	NAE-2020-01140	Coastal wetlands	Temporary Fill	\$34,013.09	0.20
Central Interior and Midcoast	2021	Penquis C.A.P.	Grandview Apartments II	Bangor	L-27085-TE-D-N, L-27085-NJ-C-A, NAE-2017-1530-M1	Freshwater wetlands	Fill	\$106,519.00	0.50
Central Interior and Midcoast	2021	Frank & Katherine Foulk	Pier System Replacement	Boothbay	NAE-2019-02689	Coastal wetlands	Shading	\$703.80	0.00
Central Interior and Midcoast	2021	Loon Call Group, LLC	Access Road	Winslow	L-15339-TE-F-N	Freshwater wetlands	Fill	\$10,341.00	0.06
Central Interior and Midcoast	2021	Tambrands, Inc	Galena Extension	Auburn	L-651-TE-I-N, NAE-2012-00271-MOD	Freshwater wetlands	Fill	\$142,929.50	0.68
Central Interior and Midcoast	2021	Randi Kirshbaum-Christian & Kenneth Christian	Accessway to house	Smithfield	L-28475-2G-B-M	Freshwater wetlands	Fill	\$3,339.75	0.02
Central Interior and Midcoast	2021	Edward Cardinali	Residential Lot, Snowhill Lane	Thomaston	L-21604-TE-C-N	Freshwater wetlands	Fill	\$24,298.50	0.11
Central Interior and Midcoast	2021	HEP Energy USA, LLC	Broadhead Solar Facility	Waterville	L-8253-PS-X-B, L-8253-TF-Y-N	Freshwater wetlands	Fill, vegetation conversion	\$79,039.00	0.48
Central Interior and Midcoast	2021	Town of Vinalhaven	Carrying Place Bridge Replacement	Vinalhaven	NAE-2020-00543	Coastal wetlands	Fill	\$16,985.00	0.05
Central Interior and Midcoast	2021	Lincoln Health	Teel Hill Parking Area	Damariscotta	L-16470-19-Y-M, NAE-2020-00844	Freshwater wetlands	Fill	\$10,525.20	0.06
Central Interior and Midcoast	2021	Spencer Properties, LLC	Wallace Events	Ellsworth	L-26022-TE-F-N, NAE-2014-242-M1	Freshwater wetlands	Fill	\$67,862.00	0.48
Central Interior and Midcoast	2022	David Hawkins	Residential Pier	Saint George	NAE-2021-00647	Coastal wetlands	Fill, shading	\$3,647.28	0.01
Central Interior and Midcoast	2022	AUG Commerce Distr. LLC	PODS Storage Facility	Gardiner	L-19861-TG-X-N	Freshwater wetlands	Fill	\$58,757.75	0.28
Central Interior and Midcoast	2022	Kohl	Kohl	Saint George	NAE-2020-01739	Coastal wetlands	Shading, Loss of substrate	\$632.00	0.00
Central Interior and Midcoast	2022	Burt Wolf	Hope Avenue Subdivision	Portland	L-19846-TG-M-N, NAE-2017-02221	Freshwater wetlands	Fill	\$43,164.00	0.18
Central Interior and Midcoast	2022	Ronald Thow	Residential Pier Residential Pier	Saint George	NAE-2020-00514	Coastal wetlands	shading, loss of surface area	\$2,414.82	0.01

Central Interior and Midcoast	2022	Clapboard Island Holdings, LLC, Neal Kolterman	Boat ramp on Clapboard Island, Falmouth, ME	Falmouth	L-28684-4E-B-M, NAE-2020-01167	Coastal wetlands	Fill	\$3,270.00	0.01
Central Interior and Midcoast	2022	Jeffrey Spinney	Spinney boat ramp	Alna	L-28397-4E-A-N, NAE-2019-01618	Coastal wetlands	Fill	\$3,440.80	0.01
Central Interior and Midcoast	2022	Kristie & Nathan Jorgensen	Residential Pier System	Harpswell	L-28074-4P-A-N, NAE-2018-02868	Coastal wetlands	Shading	\$2,064.00	0.01
Central Interior and Midcoast	2022	Waldoboro Solar LLC	Solar Facility	Washington	L-28880-TF-C-M	Freshwater wetlands	Fill, Shading	\$36,294.63	0.21
Central Interior and Midcoast	2022	Cheryl & Joe Boulos	Pier Replacement	Falmouth	NAE-2003-01651-MOD	Coastal wetlands	Shading	\$3,759.92	0.01
Central Interior and Midcoast	2022	Feliks Reikhrud, Salt Water Properties, LLC	Salt Water Properties, LLC pier, ramp, and float	Cushing	L-28506-TW-B-N, NAE-2020-00173	Coastal wetlands	Shading	\$2,730.24	0.01
Central Interior and Midcoast	2022	Geoffrey & Joan Timm	Residential pier	Harpswell	NAE-2019-02031	Coastal wetlands	Scour, shading	\$894.40	0.00
Central Interior and Midcoast	2022	Winthrop Center Solar 1, LLC	Winthrop Center Solar Project	Winthrop	L-28856-TG-B-N	Freshwater wetlands	Fill	\$169,124.35	0.80
Central Interior and Midcoast	2022	Gendron Realty, LLC	FedEx distribution center, parking lot expansion	Lewiston	NAE-2021-02949	Freshwater wetlands	Fill	\$87,809.00	0.42
Central Interior and Midcoast	2022	Lewiston Public Schools	McMahon Elementary School Parking Area	Lewiston	L-29218-TE-A-N	Freshwater wetlands	Fill	\$82,304.50	0.39
Central Interior and Midcoast	2022	Jay Solar LLC, c/o Chris Clark	Jay Solar LLC	Jay	L-28859-TG-B-N, NAE-2020-02344	Freshwater wetlands	Fill, Conversion	\$162,175.19	0.87
Central Interior and Midcoast	2022	ME Richmond Lincoln Street LLC attn: Ben Ransom	ME Richmond Lincoln Street LLC (solar)	Richmond	L-29240-TF-A-N, NAE-2021-01593	Freshwater wetlands	Fill, Conversion	\$34,553.20	0.16
Central Interior and Midcoast	2022	St. George Sea Farms LLC	Lobster Pound Reconstruction	Saint George	L-29154-4E-A-N	Coastal wetlands	Fill	\$15,651.24	0.04
Central Interior and Midcoast	2022	Boothbay Region YMCA	Boothbay Region YMCA Parking Expansion	Boothbay Harbor	L-19508-TE-C-N, NAE-2020-01076	Freshwater wetlands	Fill	\$13,405.00	0.06
Central Interior and Midcoast	2022	Borrego, LLC c/o Craig Venter	Shoreline Stabilization	Islesboro	L-29108-4D-C-N	Coastal wetlands	Fill	\$7,632.00	0.02
Central Interior and Midcoast	2022	Waste Management Disposal Services of Maine, Inc	Crossroads Landfill	Norridgewock	L-18323-TG-O-M	Freshwater wetlands	Fill	\$13,061.10	0.10
Central Interior and Midcoast	2022	Downeast Solar, LLC	Downeast Solar Project	Holden	L-29027-PS-A-N, L-29027-TH-B-N, L-29027-DP-C-N	Freshwater wetlands	Fill	\$11,560.28	0.06
Central Interior and Midcoast	2022	Erik Larsson	Erik Larsson, residential pier, ramp, float system	Harpswell		Coastal wetlands	Shading	\$401.24	0.00
Central Interior and Midcoast	2022	Roger Crouse, KENNEBEC WATER DISTRICT	Administrative and Operations Facility	Waterville	L-29425-26-A-N, L-29425-TE-B-N, NAE-2021-03145	Freshwater wetlands	Fill	\$209,869.44	0.92
Central Interior and Midcoast	2023	Maine Turnpike Authority	Maine Turnpike Authority – West Gardiner Exit	West Gardiner	NAE-2022-01866	Freshwater wetlands	Fill	\$219,131.77	0.96

Central Interior and Midcoast	2023	Brewer PV, LLC / Summit Ridge Energy	Wiswell Road Site; Summit Ridge Energy – Solar Farm	Brewer	L29062ANBNCN, NAE-2021-00751	Freshwater wetlands	Fill	\$83,811.00	0.45
Central Interior and Midcoast	2023	City of Rockland	Map 71, Lots D42, 41 & 39 off Acadia Drive Ext	Rockland	NAE-2020-00542	Freshwater wetlands	Fill	\$7,544.60	0.05
Central Interior and Midcoast	2023	David Johanson	David Johanson – Commercial Pier, Ramp, Float System	Georgetown	NAE-2022-01564	Coastal wetlands	Shading	\$719.00	0.00
Central Interior and Midcoast	2023	Maine DG Solar Pittsfield, LLC	Pittsfield Solar Project	Pittsfield	L29462-PS-A-N, L29462-DP-B-N, L29462-TG-C-N	Freshwater wetlands	Fill and Conversion	\$181,745.45	0.88
Central Interior and Midcoast	2023	BWC Brewer Lake, LLC	BlueWave Solar Farm – Orrington Solar Project	Orrington	L29499ANBNCN, NAE-2021-03173	Freshwater wetlands	Fill	\$86,520.00	0.46
Central Interior and Midcoast	2023	MSAD 28	Emergency Access Road between Schools in Rockport	Rockport	L23602-22-G-M, L23602-TE-H-B	Freshwater wetlands	Fill	\$2,102.10	0.07
Central Interior and Midcoast	2023	Shammy’s Unlimited, LLC	Shammy’s Unlimited, LLC / New Car Wash	Brewer	L29511-TE-A-N, L-29511-NJ-B-N, NAE-2021-3001	Freshwater wetlands	Fill	\$133,114.00	0.71
Central Interior and Midcoast	2023	F.W. Webb Company / Robert Mucciarone	Commercial Use Building with Parking and Loading Docks	Lewiston	L29280-TE-B-N, NAE-2021-01968	Freshwater wetlands	Fill	\$192,292.00	0.84
Central Interior and Midcoast	2023	BWC Jimmie Pond, LLC	Bluewave Project Development, LLC – Hampden Solar Project	Hampden	L-29487-TE-D-B, L-29487-PS-E-B, L-29487-DP-F-M	Freshwater wetlands	Fill and Conversion	\$74,249.18	0.40
Central Interior and Midcoast	2023	L/A Properties, LLC	Mobile Home Park Expansion	Waterville	L-22836-L1-D-N/L-22836-TE-E-N, NAE-2021-01742	Freshwater wetlands	Fill	\$134,272.00	0.64
Central Interior and Midcoast	2023	Auburn School Department	Edward Little High School Redevelopment	Auburn	L-28607-TE-A-N, NAE-2019-00305	Freshwater wetlands	Fill	\$113,343.30	0.69
Central Interior and Midcoast	2023	Town of Damariscotta	Miles Street Stabilization	Damariscotta	L-28412-4D-E-N	Coastal wetlands	Fill	\$32,799.96	0.07
Central Interior and Midcoast	2023	USS Togus Solar, LLC	Togus Solar Project	Chelsea	L-29642-TG-B-N, NAE-2022-00635-MOD	Freshwater wetlands	Fill and Conversion	\$187,489.00	0.89
Central Interior and Midcoast	2023	NextGrid Mastic, LLC	Webb Road Solar Array	Waterville	L-29200-TE-D-N, NAE-2020-00552-MODIII	Freshwater wetlands	Fill and Conversion	\$167,208.33	0.73
Central Interior and Midcoast	2023	Emily Greenwald	Skipstone, LLC PRF	Saint George	NAE-2022-1175	Coastal wetlands	Fill	\$2,414.72	0.01
Central Interior and Midcoast	2023	Waste Management Disposal Services of Maine, Inc	Airport Road Transfer Station	Norridgewock	L-18323-TG-P-N	Freshwater wetlands	Fill	\$7,415.40	0.02
Central Interior and Midcoast	2023	Winslow PV, LLC	Winslow Solar Project – Summit Ridge Energy, LLC	Winslow	L-29578-TG-C-N, NAE-2021-03316	Freshwater wetlands	Fill and Conversion	\$243,419.00	1.15

Central Interior and Midcoast	2023	Richardson Development Corporation	Paved Roadway / Access Road	Hermon	L-22743-NJ-G-A, L-22743-TE-H-M	Freshwater wetlands	Fill	\$5,623.00	0.05
Central Interior and Midcoast	2023	Central Maine Power Company	Section 80 Transmission Line Rebuild Project	Windsor	L-30155-TE-A-N / IW-B-N / VP-C-N	Freshwater wetlands	Fill	\$14,548.35	0.39
Central Interior and Midcoast	2023	Maine Department of Transportation	Stonington Mill Hill Bridge (#3063) – WIN 22356.01	Stonington	NAE-2022-01297	Coastal wetlands	Fill	\$20,334.00	0.05
Central Interior and Midcoast	2023	Three Corners Solar, LLC (Longroad Development Company, LLC)	Three Corners Solar	Unity Twp	L29746AN-GN, NAE-2018-01853	Freshwater wetlands	Fill and Conversion	\$210,517.96	0.53
Central Interior and Midcoast	2023	Versant Power	Line 1, Phase II	Ellsworth	L-29025-TH-C-N	Freshwater wetlands	Clearing	\$117,770.78	0.55
Central Interior and Midcoast	2023	Versant Power	Versant Power Line 1 Rebuild	Ellsworth	L-29025-TH-A-N, L-29025-VP-B-N	Significant wildlife habitat	Clearing	\$63,778.74	0.30
Central Interior and Midcoast	2023	Versant Power	Boggy Brook 115kV Substation Existing Conditions & Demolition	Ellsworth	L-23569-24-G-B, L-23569-TH-H-N	Freshwater wetlands	fill	\$34,509.00	0.16
Central Interior and Midcoast	2023	Sappi North America, Inc	Project Elevate	Skowhegan	L-902-TG-AB-N, NAE-2005-04173-MOD	Freshwater wetlands	fill	\$81,064.50	0.36
Central Interior and Midcoast	2023	Maine DOT	Frank Wood Bridge / Route 201	Brunswick	NAE-2021-03166	Coastal wetlands	Fill	\$20,972.00	0.09
Central Interior and Midcoast	2023	Dysarts Realty, Inc.	Convenience Store - Orono	Orono	L-10077-39-F-M	Freshwater wetlands	Fill	\$5,692.40	0.03
Central Interior and Midcoast	2023	Adam Webster	Coastal Shoreline Stabilization	Harpwell	L-30306-4D-A-N	Coastal wetlands	Fill	\$16,911.00	0.03
Central Interior and Midcoast	2023	Walden Solar Maine V, LLC	Leeds Solar Project	Leeds	NAE-2020-02382	Freshwater wetlands	Fill and Conversion	\$17,698.86	0.08
Central Interior and Midcoast	2023	Parkingway Management, LLC	Belfast Convenient MD Facility	Belfast		Freshwater wetlands	Fill	\$50,753.25	0.23
Central Interior and Midcoast	2023	Versant Power (in Bradley)	Bradley Switching Station	Bradley	L-30347-TE-A-N, NAE-2023-01471	Freshwater wetlands	Fill and Clearing	\$128,637.80	0.69
Central Interior and Midcoast	2023	Town of St. George	Improvements to Town Facility	Saint George	L-19342-4E-B-N, NAE-1966-0102-M1	Coastal wetlands	Fill	\$83,948.00	0.49
Central Interior and Midcoast	2023	Town of Bucksport	Pier Expansion	Bucksport	L-19893-4P-H-N	Coastal wetlands	Fill	\$53.40	0.00
Central Interior and Midcoast	2023	TAC Auburn LP / C/o Jason Sommers	New Three Story Self-Storage Building	Auburn	NAE-2023-02271	Freshwater wetlands	Fill	\$71,541.72	0.31
Central Interior and Midcoast	2024	David & Polly Roth, D&P Roth 2022 Trust	D&P Roth 2022 Trust Pier Modification	Saint George	L30383-4P-A-N / TW-B-N, NAE-2004-01800	Coastal wetlands	Shading	\$1,819.66	0.01
Central Interior and Midcoast	2024	Robert Dawson Living Trust &	Dawson & Landry Shoreline Stabilization	Yarmouth	NAE-2014-00771	Coastal wetlands	Fill	\$235.20	0.00

		Evelyn Landry Living Trust							
Central Interior and Midcoast	2024	Maine Maritime Academy	Waterfront Campus Improvements	Castine	L15887KNLNMN, NAE-1998-03537-M2	Coastal wetlands	Fill/Piles	\$22,710.72	0.11
Central Interior and Midcoast	2024	BD Solar Dave's Way, LLC	Solar Project Amendment	Hermon	L-19984-PS-U-B/TH-V-N/DP-W-M, NAE-2020-01508-M2	Freshwater wetlands	Fill	\$4,474.00	0.02
Central Interior and Midcoast	2024	ME DOT	ME DOT Stonington WIN 22630.00	Stonington	NAE-2023-02358	Coastal wetlands	Fill	\$22,632.00	0.11
Central Interior and Midcoast	2024	John F. Murphy Homes, Inc	Memorial Ave School Expansion	Lewiston	L28306-TE-B-N, NAE-2024-01331	Freshwater wetlands	Permanent Fill	\$180,037.44	0.78
Central Interior and Midcoast	2024	Town of Hermon	Field and Track Complex – Hermon High School	Hermon	L-18412-TE-K-N, NAE-2023-00059	Freshwater wetlands	Fill	\$110,930.82	0.59
Central Interior and Midcoast	2024	Under Canvas, Inc.	Acadia Under Canvas	Surry	L28233-TE-B-N, NAE-2020-00434	Freshwater wetlands	Fill/Direct Impact	\$58,385.00	0.44
Central Interior and Midcoast	2024	Felts Brook Solar, LLC/Hexagon Energy	Felts Brook Solar	Brewer	L-29790-TF-B-N, NAE-2023-01647	Freshwater wetlands	fill	\$149,999.85	0.80
Central Interior and Midcoast	2024	Maine Department of Transportation	Levant Bridge Replacement Project / Perkins Bridge (#6133) and Lake Bridge (#3359) – WIN 27098.00	Levant	NAE-2023-02576	Freshwater wetlands	Fill and Clearing	\$28,232.66	0.15
Central Interior and Midcoast	2024	Belfast PV, LLC c/o Kerri Neary	Belfast PV, LLC / Summit Ridge Energy, LLC - Solar Development	Belfast	L-29593-TH-C-N, NAE-2021-03191	Freshwater wetlands	Fill and Conversion	\$158,918.52	0.68
Central Interior and Midcoast	2024	Deer Park Realty Trust	Deer Park Village – 146 Unit Condo Development	Milford	L-28984-87-A-N / TE-B-N	Freshwater wetlands	Fill	\$43,479.15	0.23
Central Interior and Midcoast	2024	Central Maine Power Company	Dogtown Road / Substation Exemption	Detroit	L23904-TC-D-B / NI-E-A, NAE-2024-00900	Freshwater wetlands	Fill	\$123,350.29	0.55
Central Interior and Midcoast	2024	University of Maine	UMO Green Engineering & Materials	Orono	L-19408-TE-DG-N, NAE-1997-02618-M5	Freshwater wetlands	Fill	\$113,667.84	0.61
Downeast Maine	2009	Maine DOT	Calais-St. Stephens Border Crossing amendment	Calais	NAE-2006-00704	Freshwater wetlands	Fill	\$47,861.16	0.40
Downeast Maine	2010	Maine DOT	Acadia Gateway Center	Trenton	L-24518-2G-B-N, NAE-2006-03036	Freshwater wetlands	Fill	\$77,283.36	0.55
Downeast Maine	2010	Moosabec Mussels, Inc	Retaining wall repair	Jonesport	L-21318-4E-C-N	Coastal wetlands	Fill	\$2,813.00	0.01
Downeast Maine	2011	Fundy Contractors	Woodland Industrial Park	Baileyville	L-21437-VP-E-N	Significant wildlife habitat	Fill & Clearing	\$13,560.00	2.59
Downeast Maine	2011	Eastport Port Authority	Easport Port Authority expansion	Eastport	L-18175-TE-J-N, NAE-1993-00224-M1	Freshwater wetlands	Fill	\$30,619.00	0.24

Downeast Maine	2012	Diehl Family Partnership, Ltd.	Diehl Pier	Southwest Harbor	NAE-2011-1755	Coastal wetlands	Fill & Shading	\$3,796.20	0.01
Downeast Maine	2014	SWF, Inc.	Solid Fill Bait Shed	Cutler	NAE-1999-3067-MI	Coastal wetlands	Fill	\$7,464.00	0.03
Downeast Maine	2015	Maine DOT	Quoddy Head Road Stabilization	Lubec	NAE-2013-01723	Freshwater & coastal wetlands	Fill	\$95,400.80	0.39
Downeast Maine	2015	Alexander J. Thompson	Thompson commercial pier	Addison	NAE-2012-00231	Coastal wetlands	Shading	\$933.00	0.00
Downeast Maine	2015	Maine DOT	Eastport County Road reconstruction	Eastport	NAE-2014-00676	Freshwater wetlands	Fill & Clearing	\$123,738.00	1.14
Downeast Maine	2015	Daniel Rogde	Osmonds Boat Shop Boat Ramp	Beals	L-26490-4E-A-N	Coastal wetlands	Fill	\$10,635.90	0.04
Downeast Maine	2016	Eastport Port Authority	Eastport Port Authority Truck Scale	Eastport	L-18175-TE-L-N, NAE-1993-224-M2	Freshwater wetlands	Fill	\$21,226.00	0.16
Downeast Maine	2016	Washington Academy	Parking Area	East Machias	NAE-1998-1144-M2	Freshwater wetlands	Fill	\$4,915.00	0.04
Downeast Maine	2016	Hancock County Commissioners	Hancock County Airport modification	Trenton	L-3641-18-T-M	Freshwater & coastal wetlands	Fill	\$221.47	0.00
Downeast Maine	2016	Great Harbor Marine, Inc.	Great Harbor Marina Breakwater	Southwest Harbor	L-17150-4C-M-N, NAE-2007-908-M3	Coastal wetlands	Fill	\$156,238.00	0.58
Downeast Maine	2016	Passamaquoddy Tribe at Pleasant Point	Shoreline Stablization	Perry	L-26875-4D-A-N	Coastal wetlands	Fill	\$12,180.00	0.05
Downeast Maine	2017	The Jackson Laboratory	Parking Lot H	Bar Harbor	L-15327-TE-AR-N, NAE-2004-2677-M1	Freshwater wetlands	Fill	\$56,918.00	0.43
Downeast Maine	2017	Maine DOT	Beals Island Bridge Replacement	Jonesport	NAE-2017-00620	Coastal wetlands	Fill	\$81,678.50	0.65
Downeast Maine	2017	The Jackson Laboratory	Core Operations Center	Bar Harbor	L-15327-TE-AT-N, NAE-2004-2677-M2	Freshwater wetlands	Fill	\$63,488.00	0.47
Downeast Maine	2018	Town of Mount Desert	Wharf/Ramp Expansion	Mount Desert	L-21446-4E-E-N	Coastal wetlands	Fill	\$3,108.00	0.01
Downeast Maine	2018	Maine DOT	Route 1 Reconstruction Whiting/Edmonds	Whiting	NAE-2017-02504	Freshwater wetlands	Fill	\$60,708.60	0.48
Downeast Maine	2018	Maine DOT	Quoddy Head Road Shoreline Stablization	Lubec	NAE-2017-02369	Coastal wetlands	Fill	\$4,450.40	0.10
Downeast Maine	2018	Maine DOT	Route 102 Marsh Bridge Replacement	Southwest Harbor	NAE-2018-01546	Coastal wetlands	Fill	\$16,271.00	0.06
Downeast Maine	2019	A Little Cranberry Preserve, LLC	Little Cranberry pier ramp & floats	Cranberry Isles	NAE-2018-2414	Coastal wetlands	Shading	\$1,842.00	0.01
Downeast Maine	2019	Theodore Kopnaski	Commercial Wharf	Steuben	L-27661-4P-C-N	Coastal wetlands	Fill	\$610.00	0.00
Downeast Maine	2019	Maine DOT	Route 1A Culvert Replacement	Harrington	NAE-2019-00132	Coastal wetlands	Fill	\$4,321.00	0.02

Downeast Maine	2019	Maine DOT	Route 1 Reconstruction	Whiting	NAE-2017-02504-mod	Coastal wetlands	Fill	\$11,205.60	0.04
Downeast Maine	2019	Maine DOT	Route 102 Clark Bridge Replacement	Tremont	NAE-2016-01322	Coastal wetlands	Fill	\$1,535.00	0.01
Downeast Maine	2020	Stonington Lobster Cooperative	Co-op 1 Retaining Wall	Stonington	L-28196-4E-A-N	Coastal wetlands	Fill	\$14,736.00	0.06
Downeast Maine	2021	Maine Department of Transportation	East Machias Route 1 Reconstruction	East Machias	PBR 70364, NAE-2020-01824	Freshwater wetlands	Fill	\$163,569.00	1.29
Downeast Maine	2021	Jackson Laboratory	Housing Development	Bar Harbor	NAE-2004-02677-M3, L-15327-TE-AW-M	Freshwater wetlands	Fill	\$2,305.10	0.01
Downeast Maine	2021	K & T Rentals, LLC	Dolly Head Boat Ramp	Steuben	NAE-2005-03946-MI	Coastal wetlands	Fill	\$921.00	0.00
Downeast Maine	2021	US Department of the Navy	Entry Control Facility improvements	Gouldsboro	L-21432-TH-B-N	Freshwater wetlands	Fill	\$5,907.00	0.04
Downeast Maine	2022	A Little Cranberry Preserve, LLC	A Little Cranberry Preserve, LLC/Add Float	Cranberry Isles	L-27684-4P-A-N, NAE-2018-2414-M1	Coastal wetlands	Shading	\$657.00	0.00
Downeast Maine	2023	Marshfield Solar, LLC	Marshfield Solar, LLC – Solar Array	Marshfield	L-29553-DP-A-N, L-29553-DP-A-N, L-29553-TH-C-M	Freshwater wetlands	Fill and Clearing	\$86,827.63	0.45
Downeast Maine	2023	Skipper Shores Inc.	Pier and Boat Ramp	Bucksport	L-29001-4P-A-N / NAE-2021-01043	Coastal wetlands	Fill	\$10,867.25	0.03
Downeast Maine	2023	Maine DOT	Acadia Gateway Center	Trenton	NAE-2006-03036	Freshwater wetlands	Fill	\$247,746.60	1.16
Downeast Maine	2024	ME DOT - Tremont	ME DOT Tremont WIN 23020.00	Tremont	L-30252-4D-A-N, NAE-2022-02859	Coastal wetlands	Fill	\$57,072.00	0.27
Downeast Maine	2024	Coastal Estates, LLC / Coastal Storage, LLC	Residential development and storage facility	Hancock	L-30023-TG-A-N, NAE-2024-00715	Freshwater wetlands	Fill	\$411,592.00	1.92
Downeast Maine	2024	Downeast Wind LLC / Apex Clean Energy	Downeast Wind – 30 Turbine 126 MW Grid Scale Wind Energy Development	Columbia	L-29007-24-AN-GN, NAE-2019-01101	Freshwater wetlands	Clearing and Fill	\$485,934.10	7.02
Northwest Maine	2020	Maine DOT	Allagash-St Francis Route 161 Bank Stabilization	Allagash	NAE-2019-02471, L-28180-TC-B-N	Freshwater wetlands	Fill	\$40,291.00	0.32
Southern Maine	2009	Central Maine Power	CMP Mussey Road Substation	Scarborough	L-20588-TE-K-N, NAE-2007-2064	Freshwater wetlands	Fill	\$116,329.00	0.67
Southern Maine	2009	Park North Development, LLC	Park North Subdivision	Saco	L-23647-TE-G-N	Freshwater wetlands	Fill	\$1,054.85	0.01
Southern Maine	2009	Central Maine Power	CMP Line 197 Upgrade	South Berwick	L-24199-VP-B-N, L-24199-TE-A-N, L-24199-IW-C-N	Significant wildlife habitat	Conversion	\$52,714.00	0.16
Southern Maine	2009	Three Diamonds Realty	Haigis Parkway Professional Center	Scarborough	L-24060-TE-B-N, NAE-2006-03126	Freshwater wetlands	Fill	\$81,320.64	0.49
Southern Maine	2009	MC Portland, LLC	Morrill's Crossing	Portland	L-23925-TE-B-N	Freshwater wetlands	Fill	\$72,485.00	0.44

Southern Maine	2009	Maine DOT	Route 26 Upgrade	Poland	PBR 47161, NAE-2008-02836	Freshwater wetlands	Fill	\$418,173.45	2.31
Southern Maine	2009	Central Maine Power	CMP South Gorham Substation Expansion	Gorham	L-17618-TH-E-N, NAE-2008-03010	Freshwater wetlands	Fill	\$173,233.08	1.04
Southern Maine	2009	Kennebunk Sewer District	Kennebunk WWTP Flood Mitigation Berm	Kennebunk	L-024457-4C-C-N, NAE-2009-00616	Freshwater & coastal wetlands	Fill	\$37,425.00	0.16
Southern Maine	2009	Town of Falmouth Public Schools	Falmouth Athletic Fields	Falmouth	L-19593-TE-H-N, NAE-2009-00612	Freshwater wetlands	Fill	\$78,573.63	0.47
Southern Maine	2009	Maine DOT	Route 117 Reconstruction	Norway	PBR 47530, NAE-2009-00226	Freshwater & Significant wildlife habitat	Fill	\$279,607.08	1.45
Southern Maine	2009	Dana Lampron	Lampron Pit Stop Building Addition	Standish	L-17170-TE-I-N	Freshwater wetlands	Fill	\$2,008.00	0.01
Southern Maine	2009	Maine DOT	I-95 Exits 3 & 4	South Portland	PBR 44921, NAE-2007-03377	Coastal wetlands	Fill	\$47,520.00	0.14
Southern Maine	2009	University of New England	UNE Campus Expansion	Biddeford	NAE-2009-01365	Freshwater wetlands	Fill	\$272,895.00	1.91
Southern Maine	2010	Maine DOT	Eastern Trail	Kennebunk	PBR 48073, NAE-2009-01193	Freshwater wetlands	Fill	\$21,998.55	0.14
Southern Maine	2010	Maine DOT	Eastern Trail 2, amendment	Arundel	PBR 40873, NAE-2009-01193	Freshwater wetlands	Fill	\$1,999.48	0.01
Southern Maine	2010	City of Portland	Fall Brook Phase 3	Portland	L-20543-TG-E-N	Freshwater wetlands	Fill	\$8,954.00	0.05
Southern Maine	2010	City of Portland	Westside Sewer Replacement	Portland	L-24743-TE-A-N, L-24743-IW-B-N	Freshwater wetlands	Fill	\$98,457.00	0.56
Southern Maine	2010	Central Maine Power	Maine Power Reliability Project	Westbrook	L-24620-26-A-N, L-24620-TG-B-N, L-24620-VP-C-N, L-24620-IW-D-N, L-24620-L6-E-N, NAE-2008-03017	Freshwater wetlands	Fill	\$73,709.00	0.39
Southern Maine	2010	City of Portland	Capisic Brk Watershed CSO abatement	Portland	L-24743-TG-C-N, NAE-2010-00954	Freshwater wetlands	Fill	\$10,081.00	0.06
Southern Maine	2010	Town of Scarborough	Haigis Parkway/Rt 1 intersection improvements	Scarborough	NAE-2010-00718	Freshwater wetlands	Fill	\$22,470.47	0.13
Southern Maine	2010	Maine DOT	Naples Bay Bridge reconstruction	Naples	PBR 49918, NAE-2008-03014	Freshwater wetlands	Fill	\$51,697.14	0.15
Southern Maine	2011	Maine DOT	Rt 117 reconstruction, Norway	Norway	PBR 49726, NAE-2010-00469	Freshwater & Significant wildlife habitat	Fill	\$222,908.22	1.38
Southern Maine	2011	Black Bear Realty Co. LLC	Oxford Resort Casino	Oxford	L-25203-TE-B-N, NAE-2010-02257	Freshwater wetlands	Fill	\$147,656.00	0.97
Southern Maine	2011	Mezoian Development, LLC.	Juniper Knoll	Saco	L-21678-TE-G-N	Freshwater wetlands	Fill	\$1,963.28	0.01
Southern Maine	2011	City of Portland	Fall Brook Phase 4	Portland	L-20543-TE-F-N	Freshwater wetlands	Fill	\$3,334.50	0.02

Southern Maine	2011	PitStop Fuels, Inc.	Pitstop Fuels Bulk Storage Facility	Gray	L-25002-2G-B-M	Freshwater wetlands	Fill	\$4,508.00	0.08
Southern Maine	2011	PM Construction	FedEx Distribution Ctr. Expansion	Saco	L-20739-TE-F-N, NAE-2011-01111	Freshwater wetlands	Fill	\$18,431.28	0.10
Southern Maine	2011	Central Maine Power	CMP Section 117 Transmission Line	North Berwick	NAE-2011-00460	Freshwater wetlands	Fill, temp matting	\$47,934.00	2.03
Southern Maine	2011	Public Service Company of NH	Eliot Switching Station	Eliot	NAE-2011-00752	Freshwater wetlands	Fill, conversion, temp matting	\$35,084.97	0.83
Southern Maine	2011	Avesta Cascade Brook, LP	Cascade Brook Senior Apartments	Saco	L-23647-TA-J-N	Freshwater wetlands	Fill	\$743.82	0.00
Southern Maine	2011	Central Maine Power	Saco Bay Section 159 Upgrade	Saco	NAE-2010-00400	Freshwater wetlands	Fill, conversion, temp matting	\$117,752.39	4.80
Southern Maine	2011	Town of Falmouth Public Schools	Public school sidewalk project	Falmouth	L-19593-TG-R-N, NAE-2009-00612	Freshwater wetlands	Fill	\$16,546.00	0.07
Southern Maine	2011	Town of Kennebunkport	Kings Highway reconstruction	Kennebunkport	L-25202-4E-A-N, NAE-2011-00550	Coastal wetlands	Fill	\$13,000.00	0.03
Southern Maine	2011	IDEXX Laboratories, Inc.	Administrative building amendment and pedestrian access	Westbrook	L-001671-TE-O-N, NAE-2007-01337	Freshwater wetlands	Fill	\$8,743.50	0.05
Southern Maine	2012	Northeast Trading Company	Bernice Avenue Subdivision	Sanford	L-22407-TE-E-N	Freshwater wetlands	Fill	\$10,681.00	0.06
Southern Maine	2012	Central Maine Power	Saco Bay Section 159 Upgrade Amendment	Old Orchard Beach	NAE-2010-00400	Freshwater wetlands	Conversion	\$30,319.08	1.12
Southern Maine	2012	Daniel Higgins	Branch Heights Subdivision Lot 11	Wells	L-21743-TE-D-N	Freshwater wetlands	Fill	\$2,989.00	0.02
Southern Maine	2012	South Point Investment Co, LLC	Evergreen Farms Subdivision; lots 38 & 39	Scarborough	L-14355-TE-U-N, NAE-2012-00107	Freshwater wetlands	Fill	\$10,937.00	0.06
Southern Maine	2012	Maine DOT	Mountain Division Rail Trail Fryeburg	No Town	PBR-53207, NAE-2011-02058	Significant wildlife habitat	Fill & Conversion	\$241,221.97	1.49
Southern Maine	2012	ML Investments, LLC	Bridgton McDonalds	Bridgton	L-22289-TE-G-M, NAE-2010-01768	Freshwater wetlands	Fill, culvert	\$20,000.00	1.72
Southern Maine	2012	Central Maine Power	Maine Power Reliability Project Revision 7	Gorham	L-24620-TG-T-N	Freshwater wetlands	Fill	\$1,024.00	0.02
Southern Maine	2012	Central Maine Power	Maine Power Reliability Project Revision 7	Buxton	L-24620-TG-T-N	Freshwater wetlands	Fill	\$116.80	0.00
Southern Maine	2012	Central Maine Power	Saco Bay Section 159 Reinforcement	Saco	L-24867-TH-E-M, NAE-2010-00400	Freshwater wetlands	Fill	\$4,930.70	0.03
Southern Maine	2012	City of Portland	Fall Brook Sewer Separation	Portland	L-20543-TG-H-N, L-20543-2F-I-N	Freshwater wetlands	Fill	\$5,846.40	0.03
Southern Maine	2012	Maine DOT	Clay Hill Bridge Replacement	Kennebunk	NAE-2012-00217	Coastal wetlands	Fill	\$8,280.00	0.02
Southern Maine	2013	Wegman Family, LLC	Assisted Living Facility	Scarborough	L-23246-TE-I-N	Freshwater wetlands	Fill	\$17,900.25	0.09

Southern Maine	2013	Central Maine Power	MPRP Revision 8	Gorham	L-24620-TG-X-N, NAE-2008-03017	Freshwater wetlands	Fill	\$4,376.00	0.01
Southern Maine	2013	Central Maine Power	MPRP Revision 8	Buxton	L-24620-TG-X-N, NAE-2008-03017	Freshwater wetlands	Fill	\$77.00	0.00
Southern Maine	2013	Fairway Villas, Inc.	The Woodlands Lot 47	Falmouth	L-13859-TE-K-N, NAE-2012-01001	Freshwater wetlands	Fill	\$50,286.00	0.27
Southern Maine	2013	Maine Life Care Retirement Community, Inc.	Piper Shores Walking Trail	Scarborough	L-19496-TA-N-N	Freshwater wetlands	Fill	\$3,349.50	0.02
Southern Maine	2013	Biddeford Savings	Biddeford Savings Bank Branch	Scarborough	L-23246-TE-N-M, NAE-2013-01006	Freshwater wetlands	Fill	\$57,377.00	0.30
Southern Maine	2013	PitStop Fuels, Inc.	PitStop Fuels Expansion	Gray	L-25002-2G-C-N	Freshwater wetlands	Fill	\$19,836.00	0.05
Southern Maine	2014	Central Maine Power	MPRP Revision 9	No Town	L-24620-TG-AB-N	Freshwater wetlands	Fill	\$4,306.50	0.01
Southern Maine	2013	Regional School Unit 14	RSU 14 Elementary School Improvements	Windham	L-15060-TG-I-N, NAE-2013-01356	Freshwater wetlands	Fill	\$2,161.95	0.01
Southern Maine	2014	Maine DOT	Snake River Bridge Replacement	Biddeford	NAE-2013-01268	Coastal wetlands	Fill	\$1,035.00	0.00
Southern Maine	2014	James Prendergrast	James Prendergrast/Strawberry Fields	Saco	L-21678-TE-K-N	Freshwater wetlands	Fill	\$1,171.62	0.01
Southern Maine	2014	Maine DOT	Thompson's Point Culvert Extension	Portland	NAE-2013-01269	Coastal wetlands	Fill	\$12,136.50	0.03
Southern Maine	2014	W/S Alfred Road Properties LLC/Kohls	Kohls Store Redevelopment	Biddeford	L-20106-TG-J-B, NAE-2013-02651	Freshwater wetlands	Fill	\$5,390.28	0.03
Southern Maine	2014	Central Maine Power	Section 185A Line & West Lebanon Substation	Lebanon	L-25963-TG-A-N, NAE-2012-00419	Significant wildlife habitat	Conversion	\$175,779.00	1.02
Southern Maine	2014	Central Maine Power	Section 185A Line & West Lebanon Substation	Lebanon	L-25963-TG-A-N, NAE-2012-00419	Significant wildlife habitat	Conversion	\$2,606.00	0.05
Southern Maine	2014	Maine DOT	River Road Reconstruction	Windham	NAE-2013-02442	Freshwater wetlands	Fill	\$159,523.82	0.81
Southern Maine	2014	Billl Dodge Autogroup (William Dodge)	Classic Buick/BMW expansion	Westbrook	L-17448-TH-J-N, NAE-2002-02264	Freshwater wetlands	Fill	\$58,065.30	0.31
Southern Maine	2014	PitStop Fuels, Inc.	PitStop Fuels Expansion 2	Gray	L-25002-2G-E-N	Freshwater wetlands	Fill	\$11,734.00	0.03
Southern Maine	2014	Central Maine Power	Section 187 Line Rebuild	Standish	L-25618-IW-B-N, L-25618-VP-C-N	Significant wildlife habitat	Fill	\$498.50	0.00
Southern Maine	2014	Central Maine Power	Section 187 Line Rebuild	Buxton	L-25618-IW-B-N, L-25618-VP-C-N	Significant wildlife habitat	Fill	\$52.54	0.00
Southern Maine	2014	Mercy Hospital	Mercy Hospital Expansion	Portland	L-20775-TG-U-N, NAE-2012-00084	Freshwater wetlands	Fill	\$834,156.00	4.40
Southern Maine	2015	IDEXX Laboratories, Inc.	IDEXX Additional Parking	Westbrook	L-1671-TE-Q-N	Freshwater wetlands	Fill	\$50,725.95	0.27

Southern Maine	2015	Martin's Point Health Care, Inc.	Martin's Point Medical Office	Biddeford	L-19832-TE-I-N	Freshwater wetlands	Fill	\$20,880.00	0.11
Southern Maine	2015	Leighton Farm, LLC	Leighton Farm Subdivision-Phase I	Scarborough	L-26338-TE-A-N	Freshwater wetlands	Fill	\$41,976.15	0.11
Southern Maine	2015	Bourne Field Properties, LLC	River Walk Subdivision	Wells	L-26395-TE-B-N, NAE-2014-00183	Freshwater wetlands	Fill & Conversion	\$89,760.00	0.50
Southern Maine	2015	Maine Molecular Quality Controls, Inc	Commercial Building	Saco	L-21687-TF-F-N	Freshwater wetlands	Fill	\$6,114.78	0.03
Southern Maine	2015	Maine Turnpike Authority	Gray Interchange Reconstruction	Gray	L-26637-TG-A-N, NAE-2013-01726	Freshwater wetlands	Fill & Conversion	\$287,979.64	1.10
Southern Maine	2015	PitStop Fuels, Inc.	Second 25,000-gallon Bulk Storage Tank	Gray	L-25002-2G-F-N	Freshwater wetlands	Fill	\$2,446.45	0.01
Southern Maine	2015	Toddle Inn Daycare Inc.	Toddle Inn Daycare Facility	Scarborough	L-6503-TE-U-N, NAE-2015-01086	Freshwater wetlands	Fill	\$107,406.00	0.57
Southern Maine	2015	M-36 Associates (aka Advance Realty)	Northbrook Enercon Building Expansion	Gray	L-19757-TH-I-N, NAE-2011-02393	Freshwater wetlands	Fill	\$125,865.30	0.63
Southern Maine	2015	Village Green Cumberland, LLC	Village Green	Cumberland	L-25376-TE-B-N, NAE-2011-01168	Freshwater wetlands	Fill	\$80,805.60	0.43
Southern Maine	2015	DiversaCorp, LLC.	Orchard Estates Subdivision	Old Orchard Beach	L-26633-TE-B-N, NAE-2015-00357	Freshwater wetlands	Fill	\$91,780.00	0.51
Southern Maine	2015	Sandy River II, Inc.	Avita Nursing Home & Medical Clinic	Wells	L-26649-TF-B-N, NAE-2014-01806	Freshwater wetlands	Fill	\$277,029.00	2.22
Southern Maine	2016	South Maine LLC Homeowners Assoc	Cabot Cove Shoreline Stabilization	Kennebunkport	L-26561-4D-A-N	Coastal wetlands	Fill	\$13,182.00	0.04
Southern Maine	2016	Maine Turnpike Authority	Gray Interchange Reconfiguration	Gray	L-26637-TG-E-M, NAE-2013-01726	Freshwater wetlands	Fill	\$9,085.90	0.05
Southern Maine	2016	MSB, LLC	Juniper Knoll II Subdivision	Saco	L-21678-TG-Q-N, NAE-2014-01572	Freshwater wetlands	Fill	\$70,943.00	0.40
Southern Maine	2016	Maine DOT	Route 9 Bridge Replacement	Kennebunk	NAE-2016-01055	Coastal wetlands	Fill	\$29,885.00	0.09
Southern Maine	2016	Shaw Brothers Construction, Inc	Shaw Bros. Industrial Campus	Gorham	L-23529-TE-E-N, NAE-2016-00377	Freshwater wetlands	Fill	\$139,332.90	0.74
Southern Maine	2017	Old Fields, LLC	Outlook Subdivision	South Berwick	L-18321-TG-Q-N	Freshwater wetlands	Fill	\$14,868.00	0.08
Southern Maine	2017	US Dept of the Navy	Portsmouth Naval Shipyard, Berths 11A and 11B	Kittery	L-21179-4E-BS-M, NAE-2014-01178	Coastal wetlands	Fill	\$59,568.00	0.17
Southern Maine	2017	Cushings Associates, Inc.	Cushings Island Civilian Dock Floats	Portland	NAE-2016-00518	Coastal wetlands	Fill, shading, scour	\$1,199.70	0.01
Southern Maine	2017	Hugo Properties, LLC	Industrial building and parking expansion	Scarborough	L-6503-TE-Y-N, NAE-2017-00760	Freshwater wetlands	Fill	\$3,096.00	0.02
Southern Maine	2018	108 Mussey, LLC	108 Mussey Road commercial building	Scarborough	L-22103-TG-AA-N	Freshwater wetlands	Fill	\$3,766.80	0.02
Southern Maine	2018	Dirigo Center Developers, LLC	Dirigo Plaza	Westbrook	L-2734-TG-D-N, NAE-2015-01814	Freshwater wetlands	Fill	\$271,137.00	1.48

Southern Maine	2018	Devine Capital, LLC	Residences at Gateway Commons	Scarborough	L-23242-TG-J-N, NAE-2006-03128	Freshwater wetlands	Fill	\$25,047.50	0.13
Southern Maine	2018	Maine Turnpike Authority	Dunton Hill Underpass	Gray	NAE-2017-02621	Significant wildlife habitat	Fill	\$43,103.50	0.12
Southern Maine	2018	Life Storage, LP	Self-Storage Facility Expansion	Saco	L-27424-TE-D-N, NAE-2017-01340	Freshwater wetlands	Fill	\$77,275.20	0.43
Southern Maine	2018	IDEXX Laboratories	Southeast Lot 2 parking lot, road and pedestrian access	Westbrook	L-1671-TE-S-N, NAE-2007-01337 Mod	Freshwater wetlands	Fill	\$205,647.60	0.97
Southern Maine	2018	FKT Bayley Family Limited Partnership	Bayley Campground	Scarborough	L-21874-TG-M-N	Freshwater wetlands	Fill	\$194,407.30	1.04
Southern Maine	2018	Lucy Lacasse	Lacasse Shoreline Stabilization	Scarborough	L-27798-4D-A-N	Coastal wetlands	Fill	\$2,657.40	0.01
Southern Maine	2018	IDEXX Real Estate Holdings, Inc	Synergy East Building Addition & Parking	Westbrook	L-1671-TG-U-N, NAE-2018-00176	Freshwater wetlands	Fill	\$551,036.40	2.90
Southern Maine	2018	Hannaford Brothers Co LLC	Bridgton Hannaford Expansion	Bridgton	L-22076-TE-D-N	Freshwater wetlands	Fill	\$1,307.20	0.01
Southern Maine	2018	Wood Island Life Saving Station Association	Marine Railway, Pier & Seawalls	Kittery	L-26595-4E-A-N	Coastal wetlands	Fill	\$12,843.00	0.04
Southern Maine	2018	Trefethern Evergreen Association	Pier stabilization and precast boat launch	Portland	NAE-2018-00417	Coastal wetlands	Fill	\$1,952.20	0.01
Southern Maine	2018	City of Sanford	Sanford High School	Sanford	L-26744-22-E-B	Freshwater wetlands	Fill	\$10,599.84	0.06
Southern Maine	2018	Maine Turnpike Authority	York Toll Plaza	York	L-27241-TG-A-N, NAE-2007-01211	Freshwater wetlands	Fill	\$281,649.00	1.24
Southern Maine	2018	Richard Ciampa	Ciampa Drive Extension	York	L-27622-4C-N-N	Coastal wetlands	Fill	\$3,917.00	0.01
Southern Maine	2018	Village Green Cumberland LLC	Village Green Cumberland Phase 4	Cumberland	L-25376-TE-J-N	Freshwater wetlands	Fill	\$3,156.00	0.02
Southern Maine	2018	Town of Scarborough	Public Safety Building & access road	Scarborough	L-16166-TG-U-N, NAE-2018-01082	Freshwater wetlands	Fill	\$5,990.00	0.03
Southern Maine	2019	Langdon Street Real Estate, Inc	Portland Transportation Center	Portland	L-20318-TG-B-N, NAE-2018-00520	Freshwater wetlands	Fill	\$760,472.20	2.03
Southern Maine	2019	Real Estate Holdings, LLC	Moody's Collision Center	South Portland	L-20588-TE-N-N, NAE-2018-00575	Freshwater wetlands	Fill	\$36,304.90	0.19
Southern Maine	2019	Leighton Farm, LLC	Leighton Farm Phase 2	Scarborough	L-26338-TE-C-N, NAE-2017-00892	Freshwater wetlands	Fill	\$41,976.00	0.50
Southern Maine	2019	50 Industrial Way, LLC	Allagash Brewing Packaging Expansion	Portland	L-21059-TE-E-N, NAE-2005-4110	Freshwater wetlands	Fill	\$79,752.10	0.43
Southern Maine	2019	TFNUP, LLC	Foley's Fitness Center	Scarborough	L-24060-TE-H-N, NAE-2017-01850	Freshwater wetlands	Fill	\$120,752.60	0.64
Southern Maine	2019	Maine Turnpike Authority	MTA Stroudwater Bridges Reconstruction	Portland	NAE-2018-02268	Freshwater wetlands	Fill	\$85,097.00	0.45
Southern Maine	2019	Center for Wildlife	New campus buildings and parking	York	L-28004-VP-B-N	Significant wildlife habitat	Filling	\$5,000.00	0.69

Southern Maine	2019	Baile Development, LLC	Binnacle Hill Subdivision, Phase 2	Kennebunkport	NAE-2017-00837, L-27363-TE-E-N	Freshwater wetlands	Fill	\$115,000.00	0.64
Southern Maine	2019	Maine Turnpike Authority	Warren Avenue Overpass Rehabilitation	Portland	NAE-2018-03016	Freshwater wetlands	Fill	\$289,605.00	1.55
Southern Maine	2019	DCB Properties, LLC	Arundel Machine Tool	Arundel	L-22518-TE-F-N, NAE-2005-00538	Freshwater wetlands	Fill	\$55,274.64	0.31
Southern Maine	2019	City of Portland	Portland International Jetport Improvements	Portland	L-13760-TG-B-N, NAE-2008-00053	Freshwater wetlands	Fill	\$236,009.80	1.21
Southern Maine	2019	Bernard & Sheila Devine float	Devine Float enlargement	Falmouth	NAE-2018-03115	Coastal wetlands	Shading	\$2,202.00	0.01
Southern Maine	2019	Maine DOT	River Road Rehabilitation	Windham	L-28123-TG-B-N, NAE-2019-00307	Freshwater wetlands	Fill	\$200,552.00	1.07
Southern Maine	2019	Maine Turnpike Authority	Portland Area Widening	Portland	L-27726-TG-A-N, NAE-2019-00701	Freshwater wetlands	Fill & Conversion	\$803,816.63	4.40
Southern Maine	2019	Benjamin & Stephanie Coffin	Single Family Residence	Kennebunkport	L-27317-VP-B-N, NAE-2017-00562	Freshwater & Significant wildlife habitat	Fill	\$16,423.00	0.27
Southern Maine	2019	Crossroads Holdings, LLC	Scarborough Downs Innovation District	Scarborough	L-27956-TG-D-N, NAE-2019-00039	Freshwater wetlands	Fill	\$277,371.50	1.48
Southern Maine	2020	Maine Turnpike Authority	Exit 45 Reconfiguration	South Portland	L-28275-TG-A-N, NAE-2018-02924	Freshwater wetlands	Fill	\$1,302,164.70	8.75
Southern Maine	2020	Maine Turnpike Authority	Exit 45 Reconfiguration Modification	South Portland	L-28275-TG-A-M, NAE-2018-02924	Freshwater wetlands	Fill	\$61,811.64	1.29
Southern Maine	2020	Maine Turnpike Authority	Kennebunk Service Area Expansions	Kennebunk	L-2824-TG-A-N, NAE-2019-00914	Freshwater wetlands	Fill	\$224,849.80	1.27
Southern Maine	2020	Leighton Farm, LLC	Leighton Farm Subdivision Lot 28	Scarborough	L-26338-TE-F-N	Freshwater wetlands	Fill	\$4,811.70	0.03
Southern Maine	2020	Department of the Navy	Portsmouth Naval Shipyard, Super Flood Basin	Kittery	L-21179-4E-CA-N, NAE-2018-01232	Coastal wetlands	Fill	\$1,236,337.92	3.48
Southern Maine	2020	Pit Stop Convenience	Building Expansion & Car Wash	Standish	L-17170-TE-K-N, NAE-2005-3193-mod	Freshwater wetlands	Fill	\$2,575.70	0.01
Southern Maine	2020	City of Saco	Public Works facility & subdivide lots	Saco	L-19786-TG-AG-N, NAE-1998-02796-Mod	Freshwater wetlands	Fill	\$49,878.00	0.28
Southern Maine	2020	Crossroads Holdings, LLC	Crossforads Holdings, LLC	Scarborough	L-27956-39-C-N, L-27956-TG-D-N, NAE-2020-00227	Freshwater wetlands	Fill & Conversion	\$6,536.00	0.03
Southern Maine	2020	Central Maine Power Company	CMP - Peaks, Cushing, House Island Submarine Cables	Portland	NAE-2017-02776, PBR	Coastal wetlands	Fill, coverage	\$21,001.20	0.06
Southern Maine	2020	Central Maine Power Company	CMP - Peaks, Cushing & House Islands Submarine Cables - amendment	Portland	NAE-2017-02776	Coastal wetlands	Coverage	\$1,905.76	0.01
Southern Maine	2021	Charles Camalier III	Residential pier system	Biddeford	NAE-2018-02429	Coastal wetlands	Shading	\$5,793.06	0.02

Southern Maine	2021	Cascade Falls Apartments, LLC	Cascade Falls Apartments	Saco	L-23647 TE-O-N, NAE-2007-01309-Mod	Freshwater wetlands	Fill	\$66,801.84	0.38
Southern Maine	2021	Ashley Alexandra Holdings, LLC	Office and warehouse development	Saco	L-21687-TE-I-N, NAE-2019-01430	Freshwater wetlands	Fill	\$18,213.12	0.10
Southern Maine	2021	Abbott Diagnostics Scarborough Inc.	Abbott Labs Scarborough parking lot expansion	Scarborough	L-06503-TE-AD-N, NAE-2020-01290 MOD	Freshwater wetlands	Fill	\$254,585.85	0.79
Southern Maine	2021	U.S. Army Corps of Engineers	Wood Island Harbor and Biddeford Pool Maintenance Dredge	Biddeford	L-18947-4E-C-N, L-18947-FS-D-N, L-18947-TW-E-N	Coastal wetlands	Dredging	\$160,996.80	0.45
Southern Maine	2021	Maine Behavioral Healthcare	Center of Excellence in Autism and Developmental Disorders	Portland	L-20803-TE-F-N, L-20803-19-E-A, NAE-2002-00750-MOD	Freshwater wetlands	Fill	\$13,527.80	0.07
Southern Maine	2021	Sanford Senior Care Development, LLC	Summer Commons Care Facility	Sanford	L-28292-VP-B-N, L-28292-19-A-N, NAE-2019-01074	Significant wildlife habitat	Fill	\$28,328.10	1.17
Southern Maine	2021	Maine Life Care Retirement Community, Inc.	Piper Shores Dorado Site	Scarborough	L-28037-TE-B-N, L-28037-87-A-N, NAE-2018-02524	Freshwater wetlands	Fill	\$85,101.30	0.45
Southern Maine	2021	Robert Williamson	Robert Williamson shoreline stabilization	Kennebunkport	L-20354-4D-D-N, NAE-2020-00304	Coastal wetlands	Fill	\$10,795.68	0.03
Southern Maine	2021	Bluebird Scarborough, LLC	Self-storage facility	Scarborough	L-27656-TF-B-N, NAE--2018-01642	Freshwater wetlands	Fill	\$101,148.90	0.54
Southern Maine	2021	Consolidated Communications	Submarine cable from Peaks Island to Cushing Island	Portland	NAE-2019-02215	Coastal wetlands	Cover	\$2,382.20	0.01
Southern Maine	2021	Matthew Bennett	Shorline Stabilization	Falmouth	:-28448-4D-A-N	Coastal wetlands	Fill	\$5,395.18	0.01
Southern Maine	2021	Matthew Bennett	Shoreline Stabilization and Temp Pier System	Falmouth	NAE-2019-03089	Coastal wetlands	Fill	\$1,358.80	0.00
Southern Maine	2021	Joan Gordon, Maine Molecular Quality Controls, LLC	Maine Molecular Quality Controls, LLC - 2020 Building Addition and Parking Lot	Saco	L-21687-TE-K-N, NAE-20015-00700-MOD	Freshwater wetlands	Fill	\$10,106.16	0.06
Southern Maine	2021	Crossroads Holdings, LLC	The Downs - Town Center Residential - Phase 7	Scarborough	L-27956-MX-T-N, L-27956-TG-U-N	Freshwater wetlands	Fill	\$26,814.00	0.11
Southern Maine	2022	Dirigo Center Developers, LLC	Westbrook Arterial Intersection Improvements	Westbrook	L-2734-TG-L-N, NAE-2015-01814-MOD	Freshwater wetlands	Fill	\$66,899.00	0.28
Southern Maine	2022	Jesse Realty, LLC	Pier System and Shoreline Stabilization	Eliot	L-28374-4P-A-N	Significant wildlife habitat	Fill	\$11,505.60	0.03
Southern Maine	2022	Ballantyne Development, LLC	North Village	Scarborough	L-23643-87-H-B, L-23643-TE-I-N, NAE-2007-01665-MOD	Freshwater wetlands	Fill	\$63,412.10	0.28

Southern Maine	2022	Copart of Connecticut, LLC	Copart Vehicle Auction Facility	Windham	L-29113-26-A-N, L-29113-VP-B-N, L-29113-IW-C-N	Freshwater wetlands	Fill	\$49,924.26	1.66
Southern Maine	2022	Paul F. Henderson	Paul F. Henderson Shoreline Stabilization	Kennebunkport	L-28416-4D-A-N, NAE-2019-01887	Coastal wetlands	Fill	\$4,651.20	0.01
Southern Maine	2022	Maine Life Care Retirement Community, Inc	Parking Area Expansion	Scarborough	L-19496-TG-S-N	Freshwater wetlands	Fill	\$761.10	0.00
Southern Maine	2022	Oceanview at Cumberland, LLC	Oceanview at Cumberland, LLC/Cumberland Crossing – Phase 2	Cumberland	L-27834-26-D-N, L-27834-TE-E-N, NAE-2018-00545	Freshwater wetlands	Fill	\$120,133.40	0.64
Southern Maine	2022	Jeff Lord, Gorham ME 1, LLC	Gorham Solar 4.875 MW (AC)	Gorham	NRPA/NAE-2020-002427	Freshwater wetlands	Conversion	\$33,452.92	0.14
Southern Maine	2022	Trefethen-Evergreen Improvement Association c/o Richard Whaley	Trefethen-Evergreen Improvement Association	Portland	NAE-1998-03364-MOD II	Coastal wetlands	Shading	\$763.00	0.00
Southern Maine	2022	Les Bodwell, Nevina Estates, LL	Nevina Estates, LLC Residential Subdivision	Berwick	L-23837-TE-E-N, NAE-2007-2488-REAUTH	Freshwater wetlands	Fill	\$92,221.11	0.41
Southern Maine	2023	Heather Motes	Sand Dollar Real Estate, LLC	Kennebunkport	NAE-2021-02205	Coastal wetlands	Fill	\$1,972.20	0.01
Southern Maine	2023	Maine Turnpike Authority	Saco - Exits 35 & 36 Interchange Improvements Project	Saco		Freshwater wetlands	Permanent Fill/Grading	\$685,288.00	3.03
Southern Maine	2023	Fallbrook Commons Development, LLC / Daniel Maguire	Fallbrook Commons – 90 bed licensed nursing care center	Portland	L11219-TE-H-N, NAE-2020-01331	Freshwater wetlands	Fill	\$209,612.45	0.88
Southern Maine	2023	Dan Bacon, Crossroad Holdings, LLC & Mark Marchisano, Costco Wholesale Corp	Phase 8 / Retail Facility / Costco Wholesale and Lot 1C at The Downs	Scarborough	L27956AANABN, L27956AANABN	Freshwater wetlands	Fill	\$126,414.12	0.49
Southern Maine	2023	JCS 5, LLC / Jonathon Smith	JCS 5, LLC; Driveway and Culvert for Gorham Industrial Parkway development	Gorham	L21350-TE-F-A, NAE-2022-01139	Freshwater wetlands	Fill	\$14,987.50	0.06
Southern Maine	2023	The Shops at Falmouth Center, LLC	Mixed Use Development	Falmouth	L-29972-NJ-A-N, L-29972-TE-B-N, NAE-2022-01749-MOD1	Freshwater wetlands	Fill	\$97,702.08	0.38
Southern Maine	2023	New England Battery Storage, Inc.	Battery energy storage system	South Portland	L-20588-TE-P-N, NAE-2021-00511	Freshwater wetlands	Fill	\$112,984.20	0.44

Southern Maine	2023	Crossroads Holdings, LLC / Dan Bacon	Phase 9 of “The Downs”	Scarborough	L27956-MX-AD-N / TG-AE-N, NAE-2020-00227-MOD4	Freshwater wetlands	Fill	\$86,512.44	0.34
Southern Maine	2023	Gold Ribbon Drive, LLC	SEAWALL RECONSTRUCTION AND PLACEMENT OF RIPRAP	Wells	L-30003-4D-A-N	Coastal wetlands	Fill	\$6,171.00	0.01
Southern Maine	2023	Cross Town Energy Storage, LLC	Battery Energy Storage	Gorham	L-0003-TE-AU-N, NAE-2017-01049-MOD	Freshwater wetlands	Fill and Conversion	\$309,141.00	1.21
Southern Maine	2023	Conroy-Tully Walker Funeral Homes / Adam Walker	Funeral Home Parlor and Parking Lots	Portland	NAE-2018-01631-M1	Freshwater wetlands	Fill	\$51,014.88	0.20
Southern Maine	2023	Wahwa Family Limited Partnersip	Shoreline Stabilization	Kennebunkport	L-30381-4D-A-N	Coastal wetlands	Fill	\$2,440.20	0.01
Southern Maine	2024	Port Harbor Holdings I, LLC (attn: Mr. Mike Soucy)	Marina Expansion	Raymond	L-28500-NB-B-N/TE-C-N, NAE-2022-01933	Freshwater wetlands	Fill	\$117,652.92	0.46
Southern Maine	2024	ME DOT	Reconstruct 202 – Lyman/Hollis – WIN 22641.00	Lyman	NAE-2023-01348, NAE-2023-01352	Freshwater & Significant wildlife habitat	Fill	\$142,196.04	0.49
Southern Maine	2024	Country Club Estates, LLC / Timothy Swenson & Cary Seamons	Dunegrass Section C – (Dunegrass Golf Club)	Old Orchard Beach	L-15068-L2-AN-A, NAE-2021-02856	Freshwater wetlands	Fill	\$86,533.00	0.38
Southern Maine	2024	Dirigo Center Developers, LLC	Phase 4 Surcharge Area	Westbrook	L-2734-TG-T-B, NAE-2015-01814	Freshwater wetlands	Fill	\$4,808.00	0.02
Southern Maine	2024	Regional School Unit 14	RSU 14 – Raymond-Windham Middle School	Windham	L-31298-22-A-N/TG-B-N, NAE-2023-02218	Freshwater & Significant wildlife habitat	Fill and Conversion	\$864,404.78	3.30
Southern Maine	2024	Maine Turnpike Authority	Drainage Ditch Restoration Project, Northbound Mile Marker 35.5, Saco	Biddeford	PBR - 78716, NAE-2023-02361	Freshwater wetlands	Fill and Excavation	\$156,070.60	0.62
Southern Maine	2024	Town of Kennebunk	Public Works	Kennebunk	L-30408-TE-A-N/NJ-B-N, NAE-2023-01462	Freshwater wetlands	Fill	\$122,950.80	0.49
Southern Maine	2024	NDVH Maine Realty, LLC / Marta Agrondia	Veterinary Emergency & Specialty Care Clinic - Falmouth	Falmouth	L31065-19-A-N / TE-B-N, NAE-2024-00947	Freshwater & Significant wildlife habitat	Fill	\$159,265.00	0.61
Southern Maine	2024	RLS Complete Maine Propco, LLC / Ryan Hedge	Core X Partners	Gorham	NAE-2023-00337	Freshwater wetlands	Fill	\$75,693.24	0.30

Southern Maine	2024	456 Bills, LLC / Jason Koperniak	Replacement of Concrete Seawall	Wells	L-30001-4D-A-N/TW-B-N	Coastal wetlands	Fill	\$12,095.00	0.05
Southern Maine	2024	Judith McKenna	Pier	Kittery	NAE-2022-02668-MOD	Coastal wetlands	Shading	\$1,649.34	0.01
Southern Maine	2024	Eastern Slope Airport Authority	Runway Extension, Taxiway Reconstruction & New Hangars	Fryeburg	L8645-18-PA/2G-Q-N/IW-R-N, NAE-2009-02691	Freshwater & Significant wildlife habitat	Fill	\$144,794.06	2.30